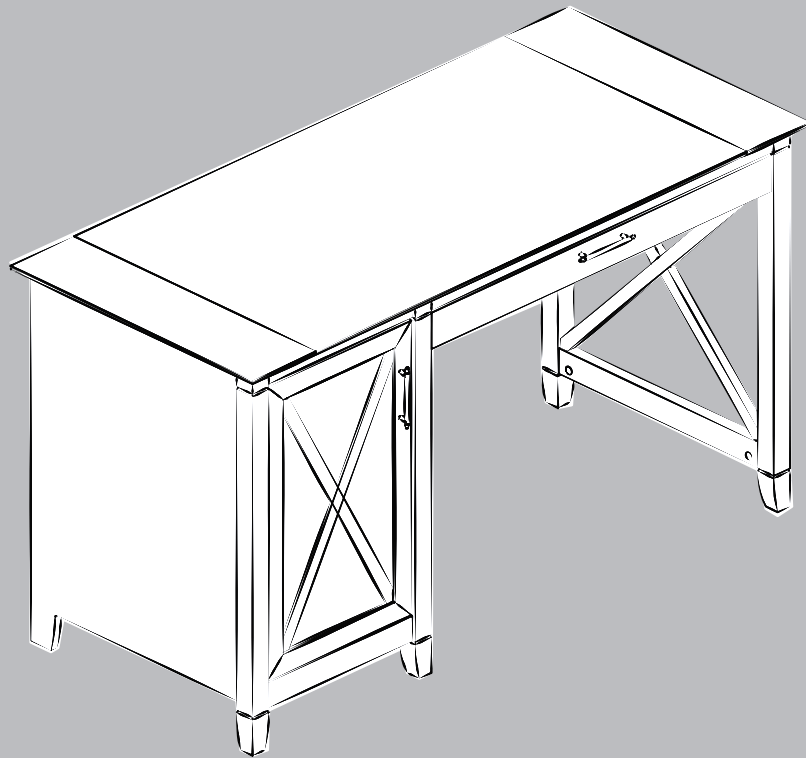


ASSEMBLY INSTRUCTION

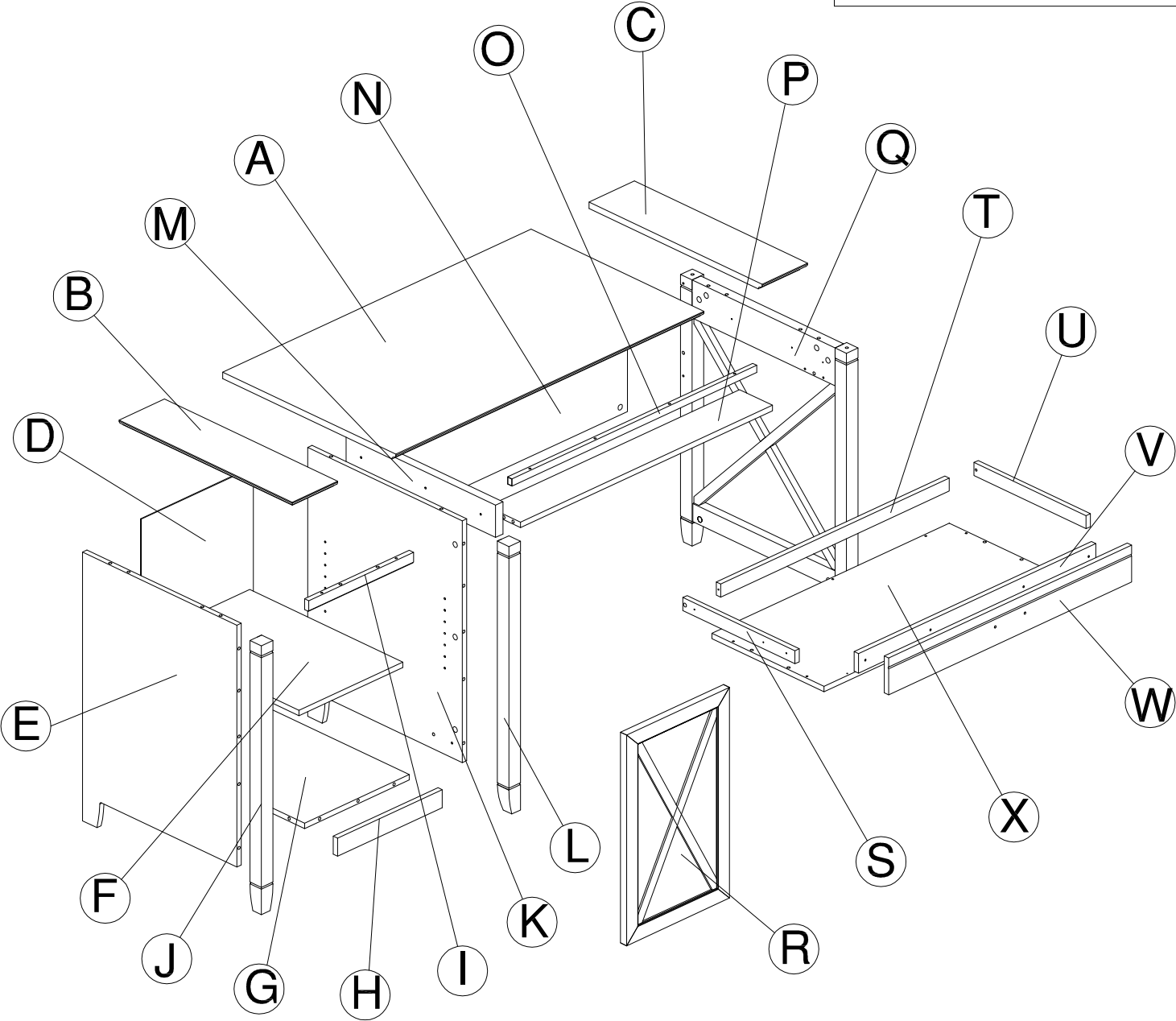
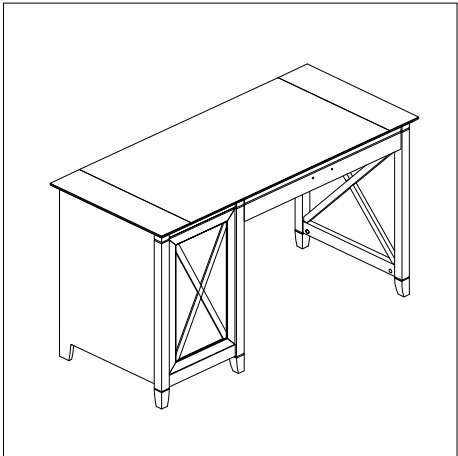


Writing Desk

Assembly instructions and
warranty information

The maximum recommended weight allowance is 100 lbs (45 kg) for top surface.

Item KWD154WG / KWD154BC



MODEL KWD154WG

A [1]	W181231	O [1]	H181242
B [1]	W181232	P [1]	W181006
C [1]	W181233	Q [1]	S181243
D [1]	W180994	R [1]	S181008
E [1]	W180995	S [1]	W181244
F [1]	W180996	T [1]	W181010
G [1]	W181234	U [1]	W181245
H [1]	W181235	V [1]	W181012
I [1]	W181236	W [1]	W181013
J [1]	W181237	X [1]	W181014
K [1]	W182965		
L [1]	W182966		
M [1]	W181240		
N [1]	W181241		

MODEL KWD154BC

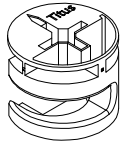
A [1]	W183022	O [1]	H181242
B [1]	W183023	P [1]	W183017
C [1]	W183024	Q [1]	S183013
D [1]	W183014	R [1]	S183012
E [1]	W183015	S [1]	W183031
F [1]	W183016	T [1]	W183018
G [1]	W183025	U [1]	W183032
H [1]	W183026	V [1]	W183019
I [1]	W183027	W [1]	W183020
J [1]	W183028	X [1]	W183021
K [1]	W183033		
L [1]	W183034		
M [1]	W183029		
N [1]	W183030		

Fasteners are shown in actual size.

Los fijadores son demostrados en su tamaño actual.

Les attaches sont montrées dans l'échelle grandeur.

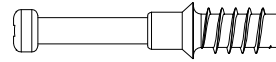
H181468



KD Cam

Quantity
28

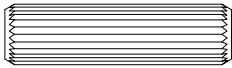
H180604



KD Bolt

Quantity
28

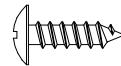
H38169



Wood Dowel
8 x 30mm

Quantity
27

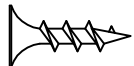
H101725



#6 x 1/2"

Quantity
14

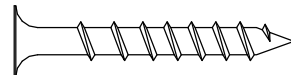
H153242



#8 x 5/8"

Quantity
8

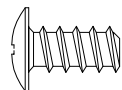
H23198



#10 x 1-1/2"

Quantity
13

H146988



#12 x 1/2"

Quantity
2

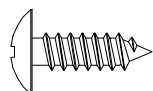
H160803



M4 x 19mm

Quantity
4

H23119



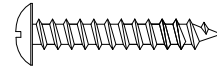
#10 x 5/8"

Quantity
16

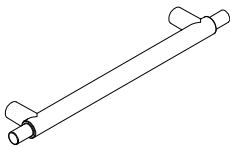
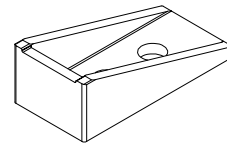
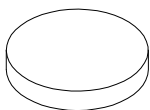
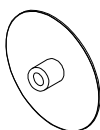
Fasteners are shown in actual size.

Los fijadores son demostrados en su tamaño actual.

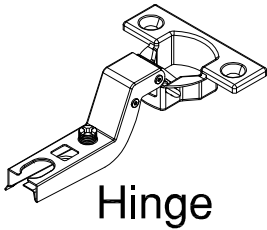
Les attaches sont montrées dans l'échelle grandeur.

H34174**Quantity**
18**#3x 3/4"****H24437****Quantity**
7**#8 x 1"**

HARDWARE

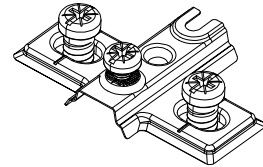
H180971**Quantity**
2**Handle****H149994****Quantity**
1**Rubber Stop****H149989****Quantity**
1**Bumper****MODEL KWD154WG****H180730****Quantity**
14**Cover Cap****MODEL KWD154BC****H159346****Quantity**
14**Cover Cap**

H170611

Quantity
2

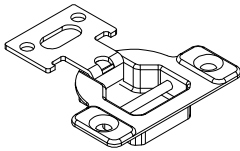
Hinge

H170612

Quantity
2

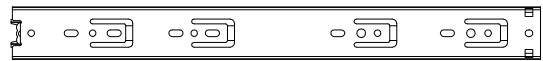
Mounting Plate

H180675

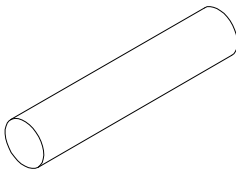
Quantity
2

Hinge

H167910

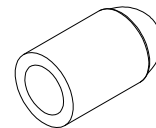
Quantity
214" Slide
350mm

H23604

Quantity
4

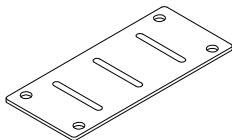
Shelf Pin

H126396

Quantity
4

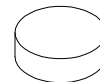
Shelf Pin Sleeve

H39922

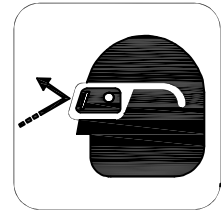
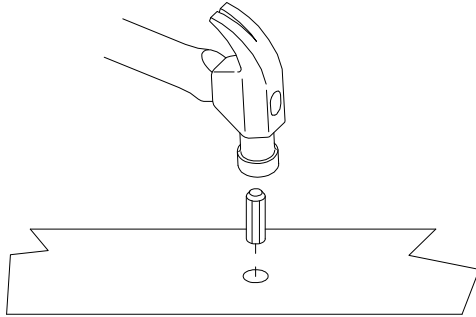
Quantity
4

Strap

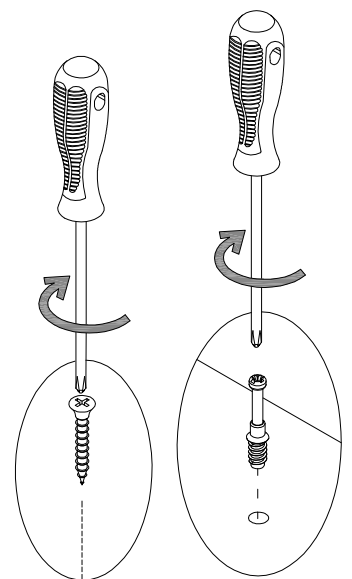
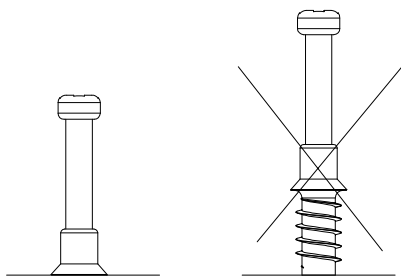
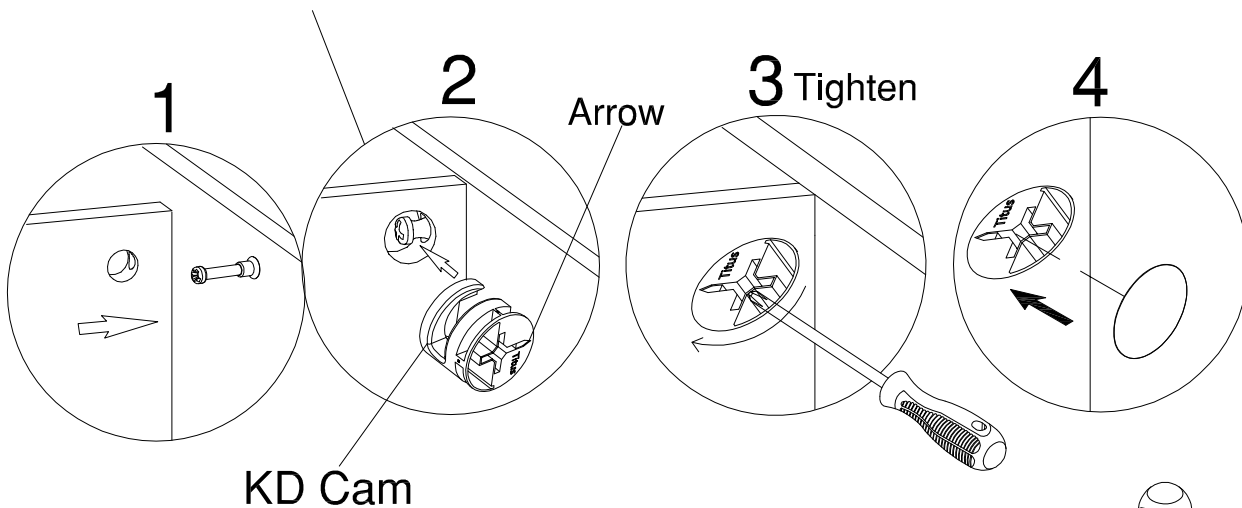
H180671

Quantity
2Bumper
Ø10x4mm

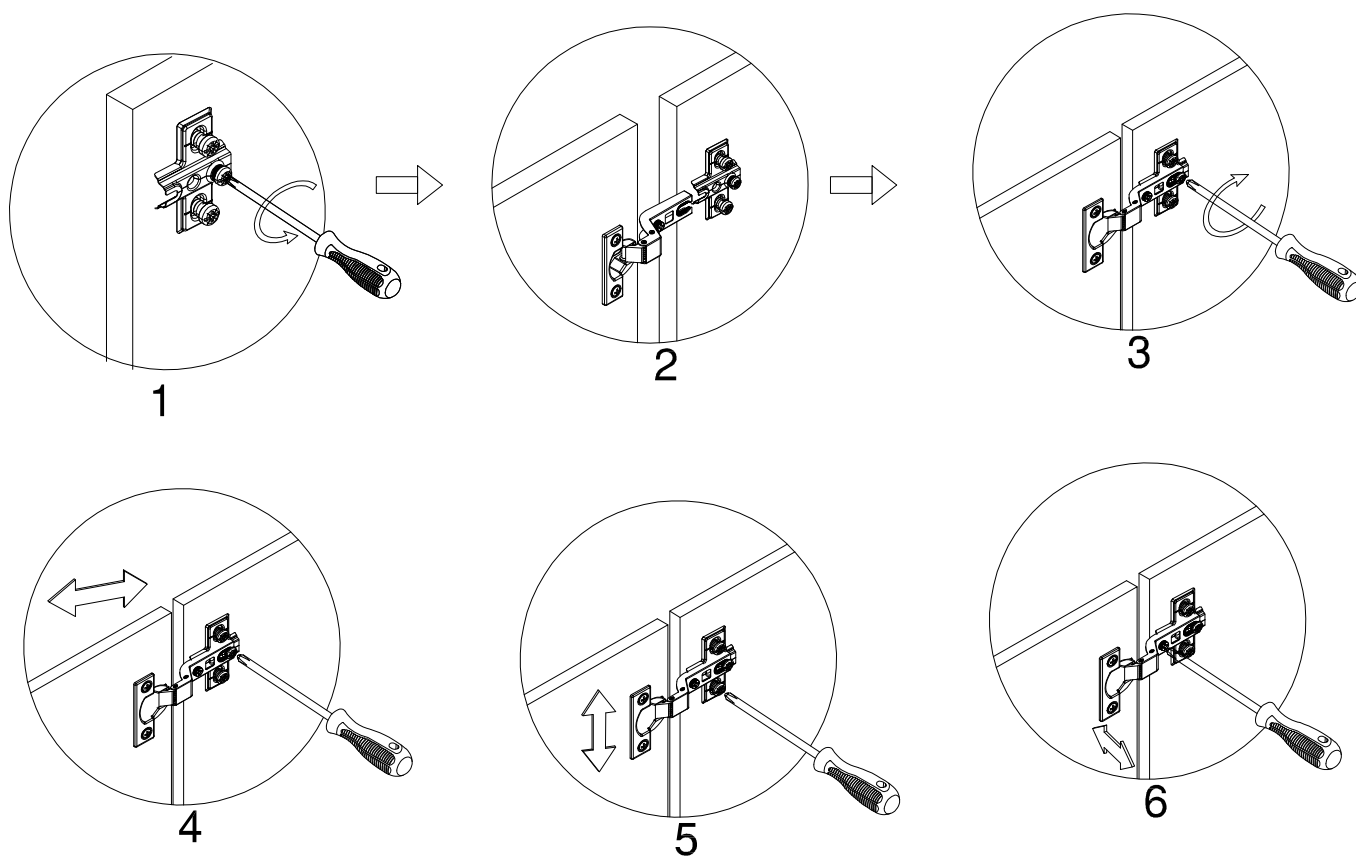
Common assembly techniques.
Técnica común de ensamblaje.
Techniques communes d'assemblage.



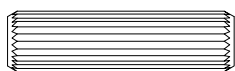
Push the KD cam all the way into the hole before tightening.
Empujar la leva KD hasta el final en el agujero antes de apretar.
Pousser la came de KD tout le chemin dans le trou avant de serrer.



Common assembly techniques.
Técnica común de ensamblaje.
Techniques communes d'assemblage.

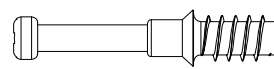


H38169



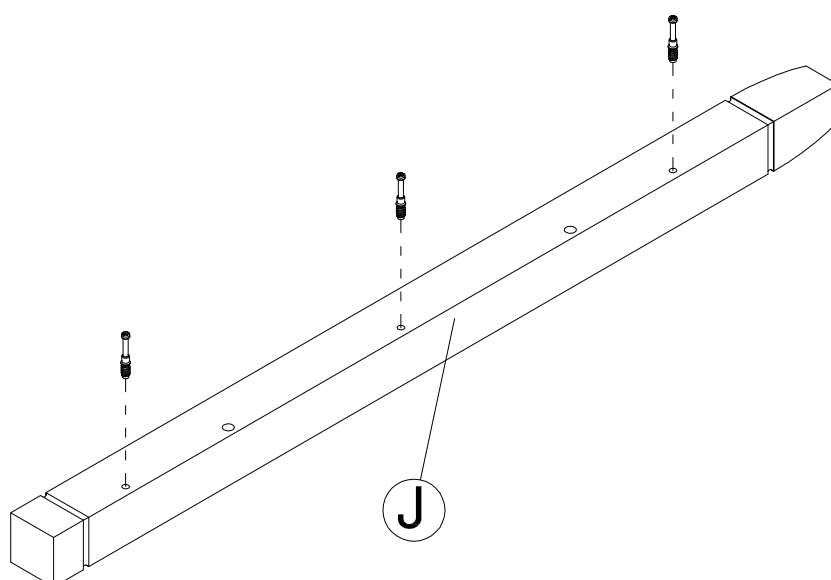
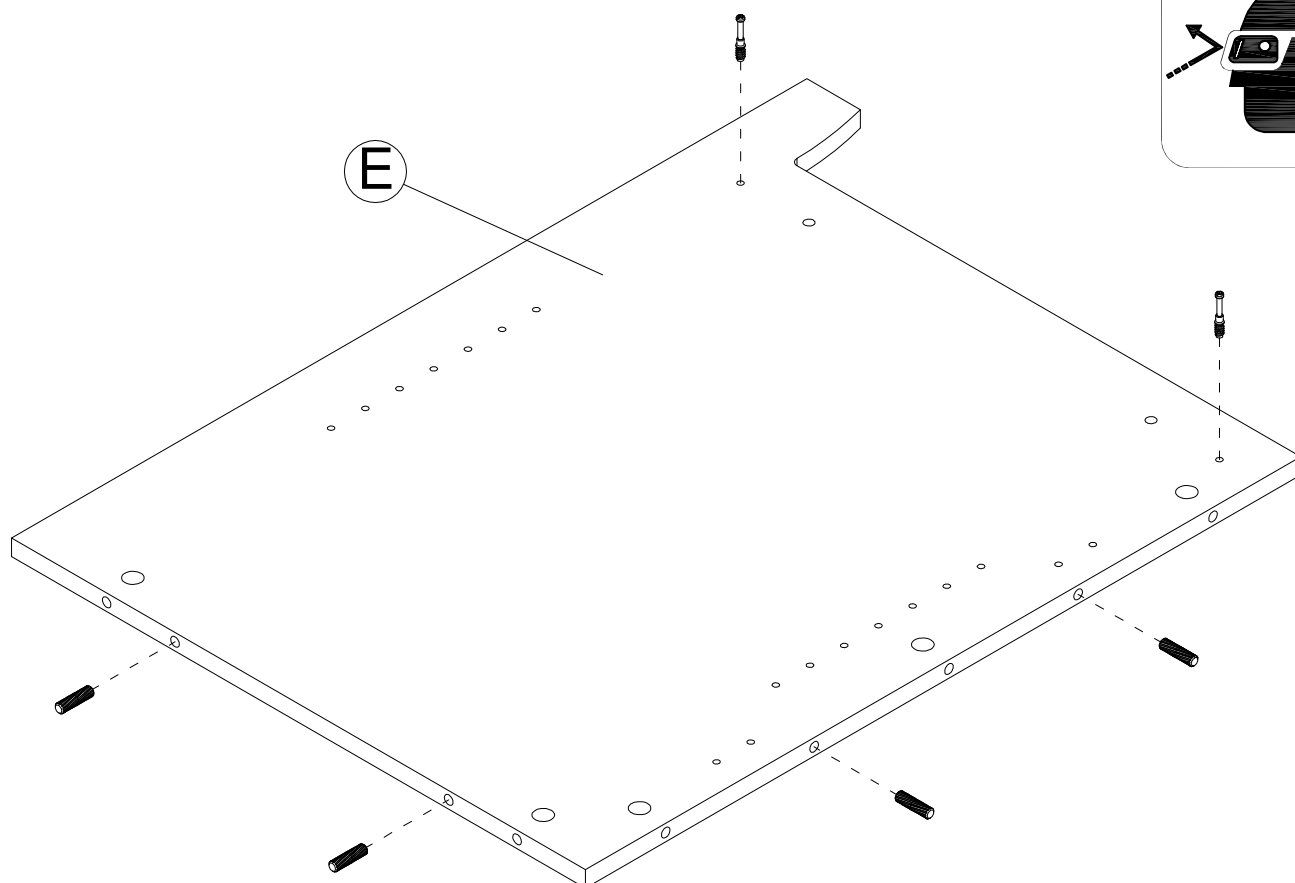
Wood Dowel
8 x 30mm

[4] H180604

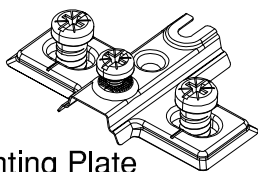


KD Bolt

[5]



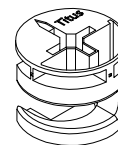
H170612



[2]

Mounting Plate

H181468

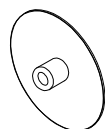


[3]

KD Cam

MODEL KWD154WG

H180730



[3]

Cover Cap

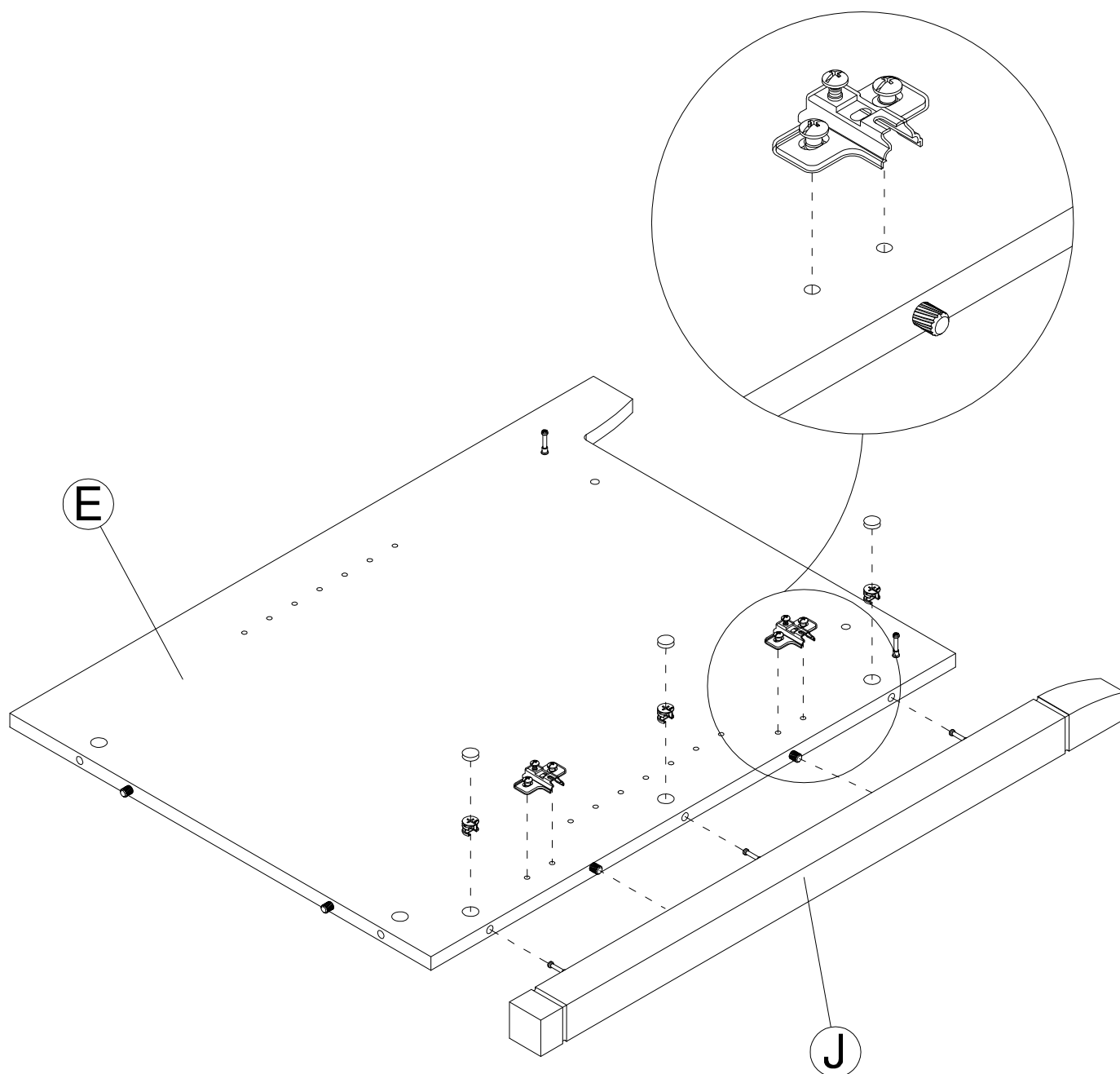
MODEL KWD154BC

H159346



[3]

Cover Cap



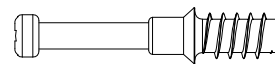
H38169



Wood Dowel
8 x 30mm

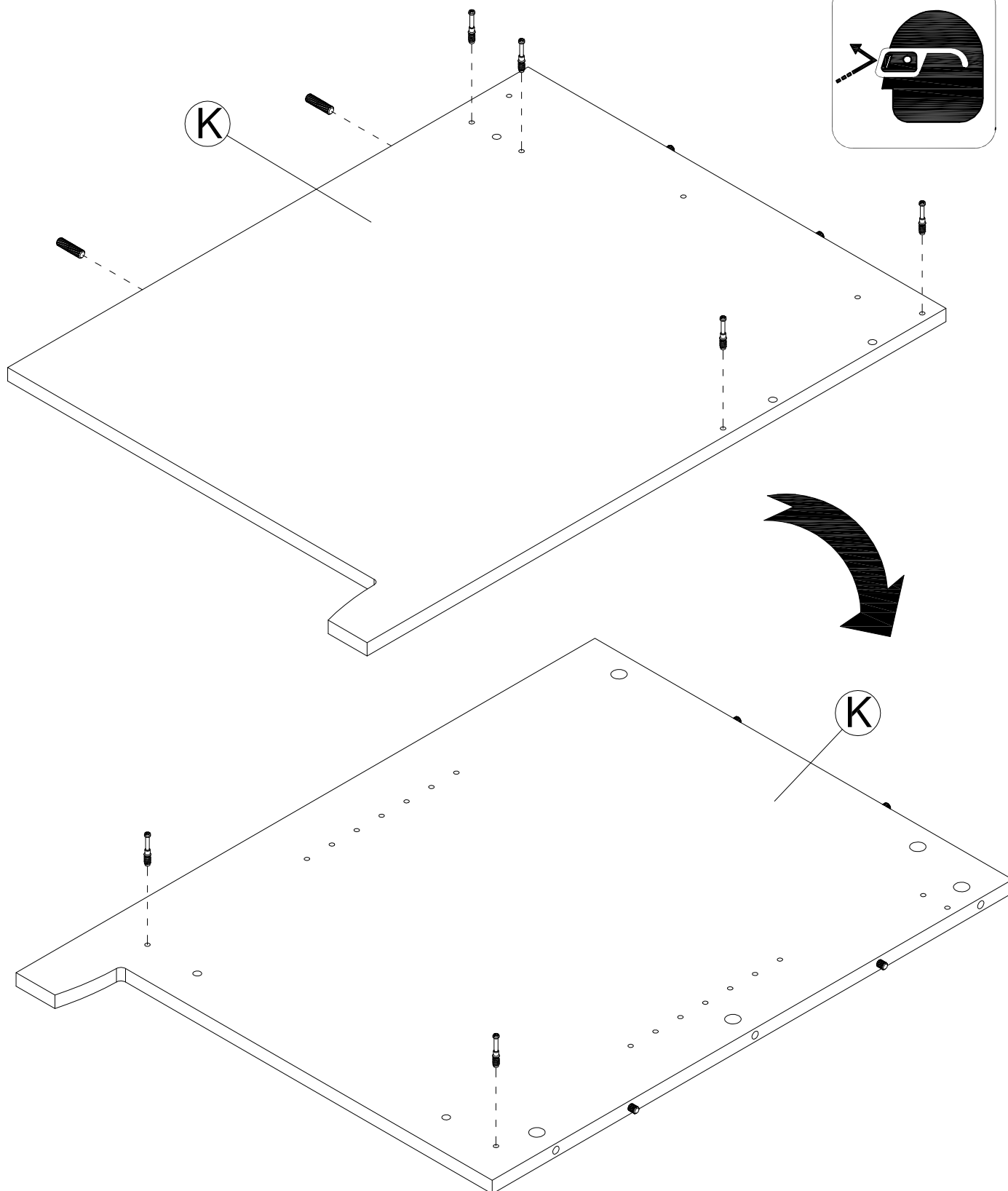
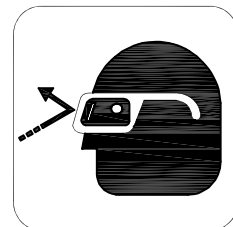
[2]

H180604

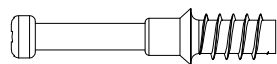


KD Bolt

[6]



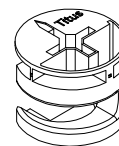
H180604



KD Bolt

[3]

H181468

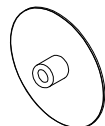


KD Cam

[3]

MODEL KWD154WG

H180730



Cover Cap

[3]

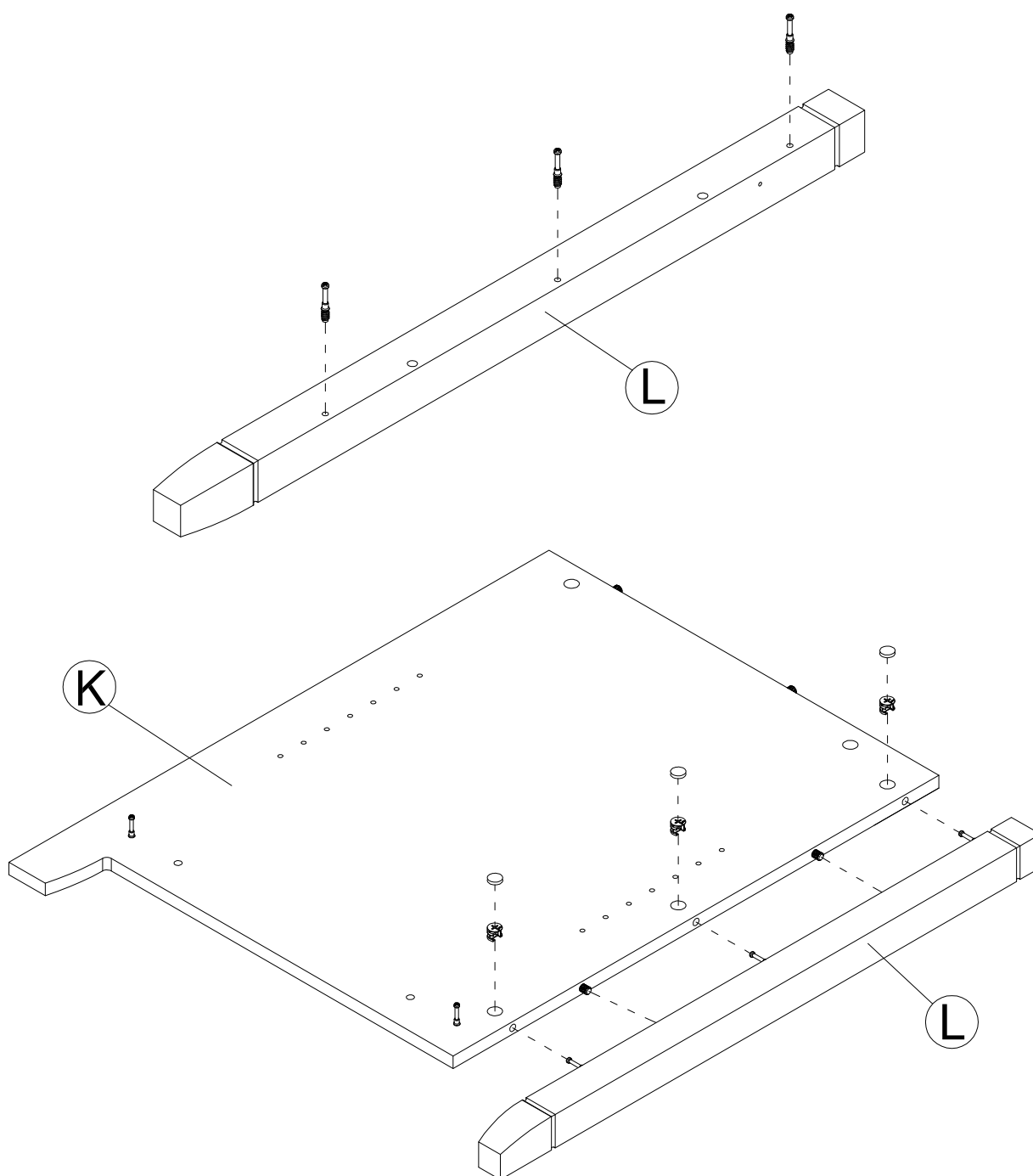
MODEL KWD154BC

H159346

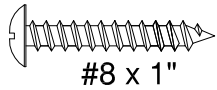


Cover Cap

[3]

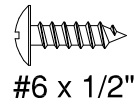


H24437



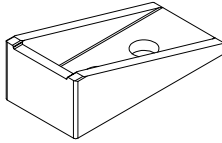
[3]

H101725



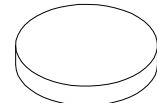
[2]

H149994



[1]

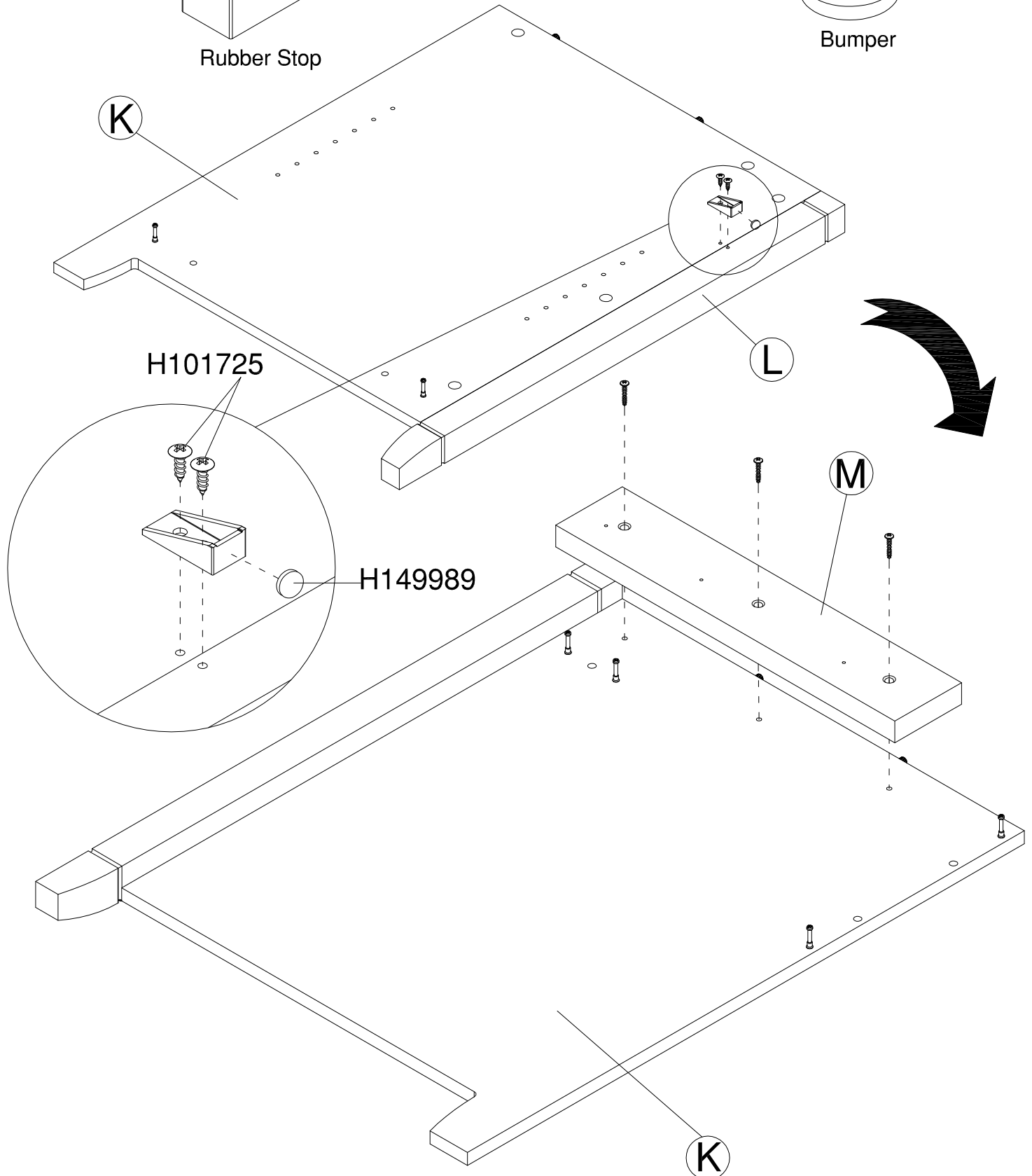
H149989



[1]

Rubber Stop

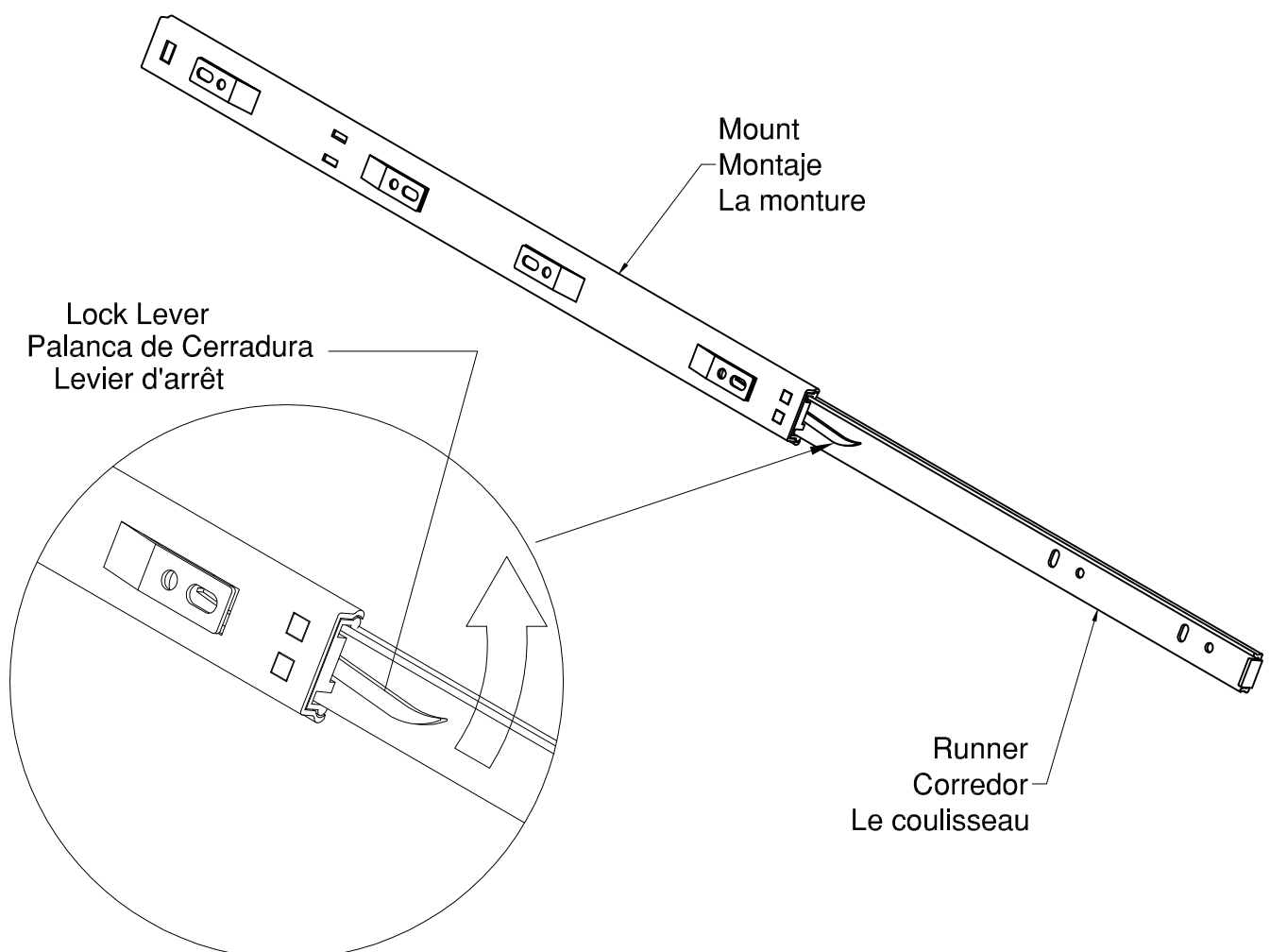
Bumper



Common assembly techniques.
Técnica común de ensamblaje.
Techniques communes d'assemblage.

Move lock lever on the runner as shown to separate runner from mount .
Mueva la palanca de seguro en el corredor del montaje como se muestra.
Déplacez le levier de verrouillage sur le coulisseau comme illustré pour séparer le coulisseau de la monture .

Set runner aside to be used later in the Assembly Instructions.
Haga el corredor hacia un lado porque sera utilizado mas adelante.
Mettez le coulisseau de côté pour être utilisé plus tard dans les instructions d'assemblage.

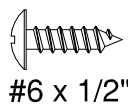


H167910

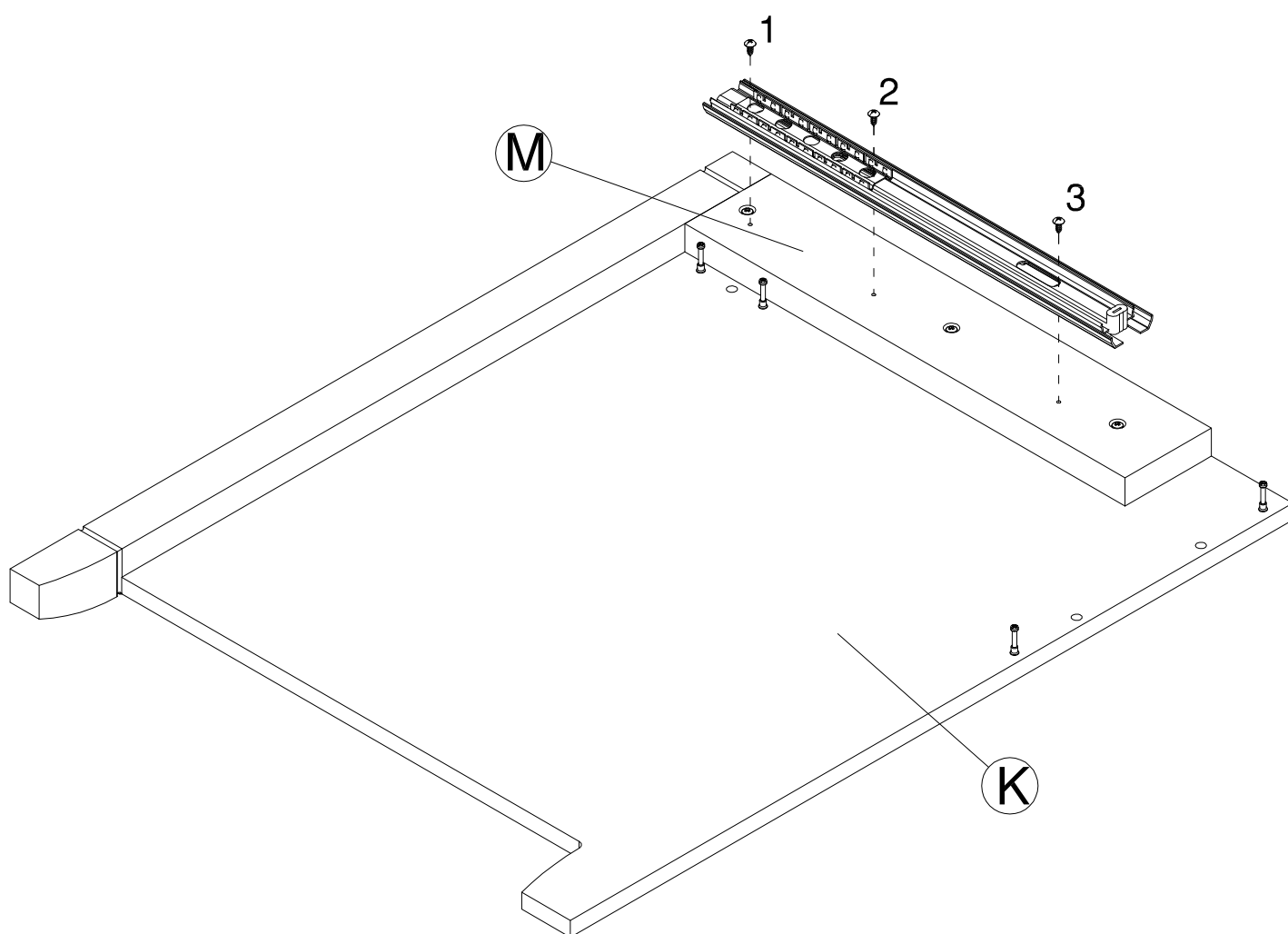


[1]

H101725



[3]



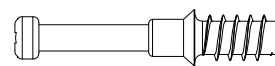
H38169



Wood Dowel
8 x 30mm

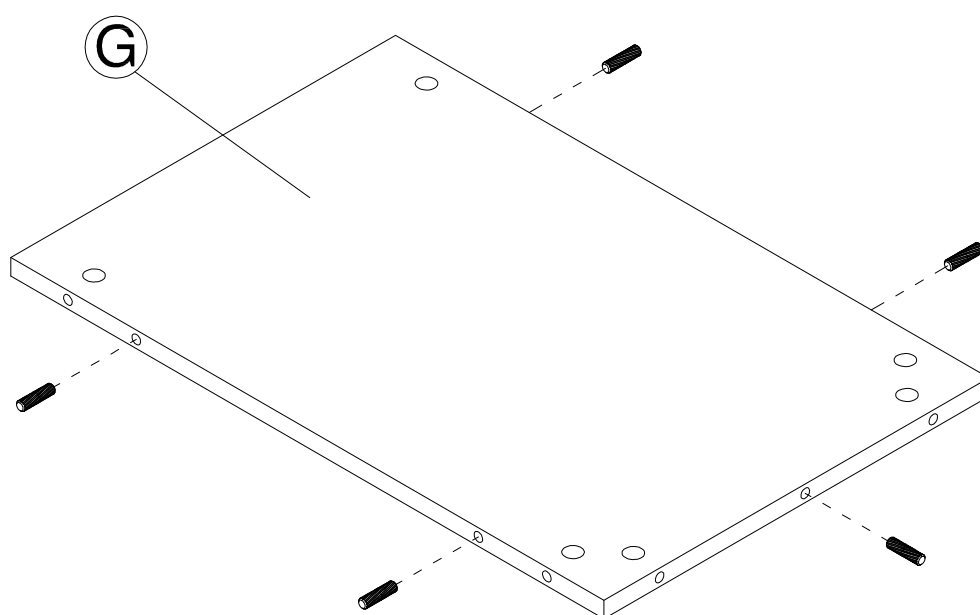
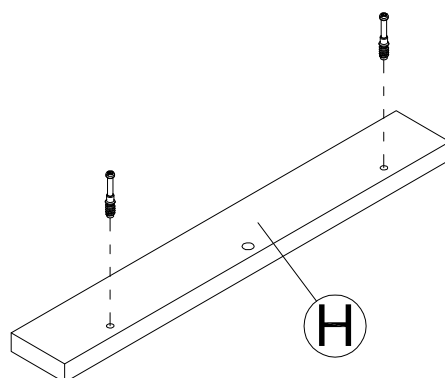
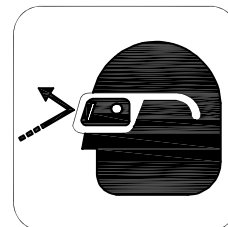
[5]

H180604

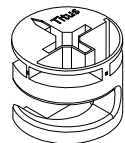


KD Bolt

[2]

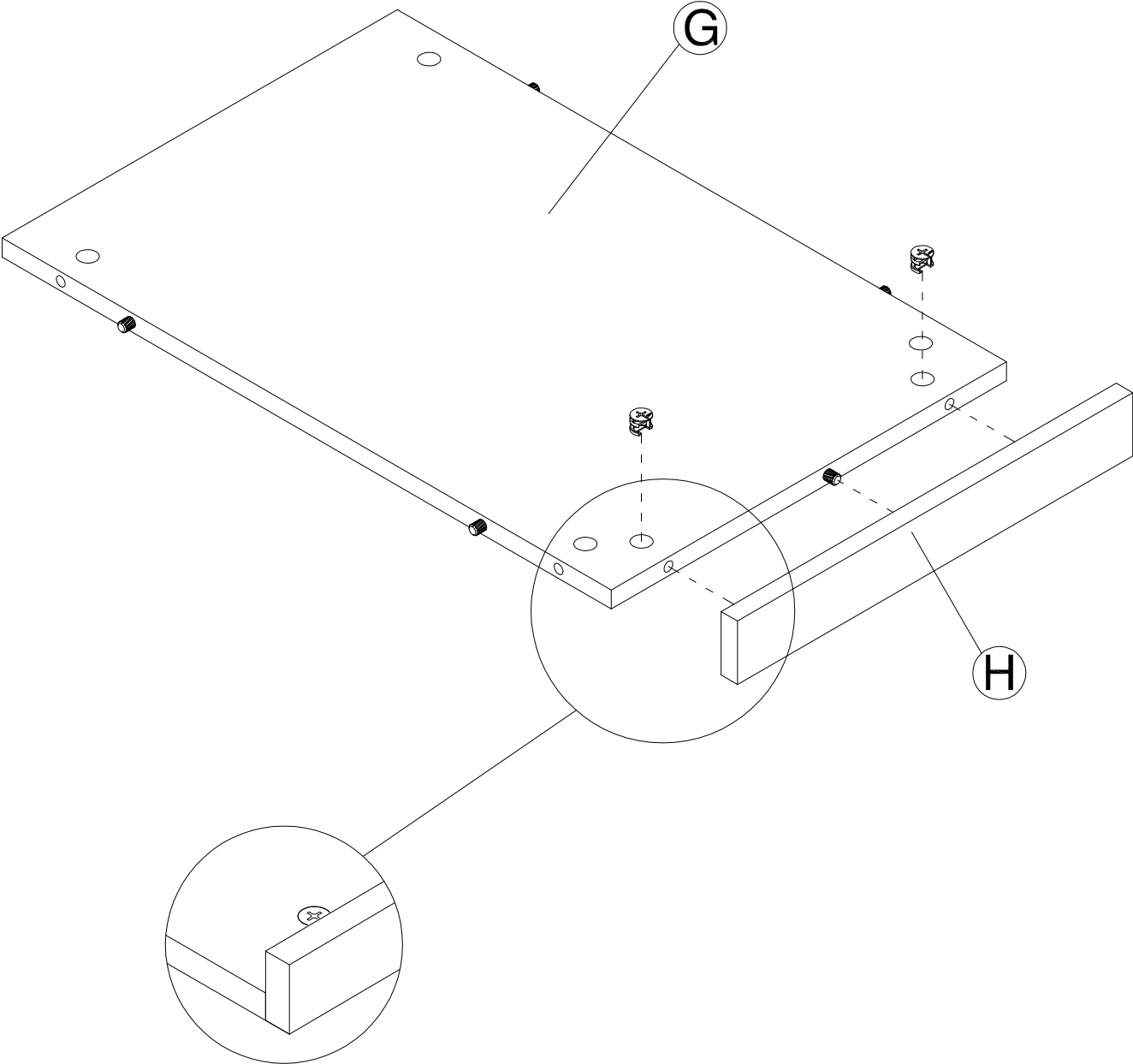


H181468

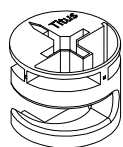


KD Cam

[2]



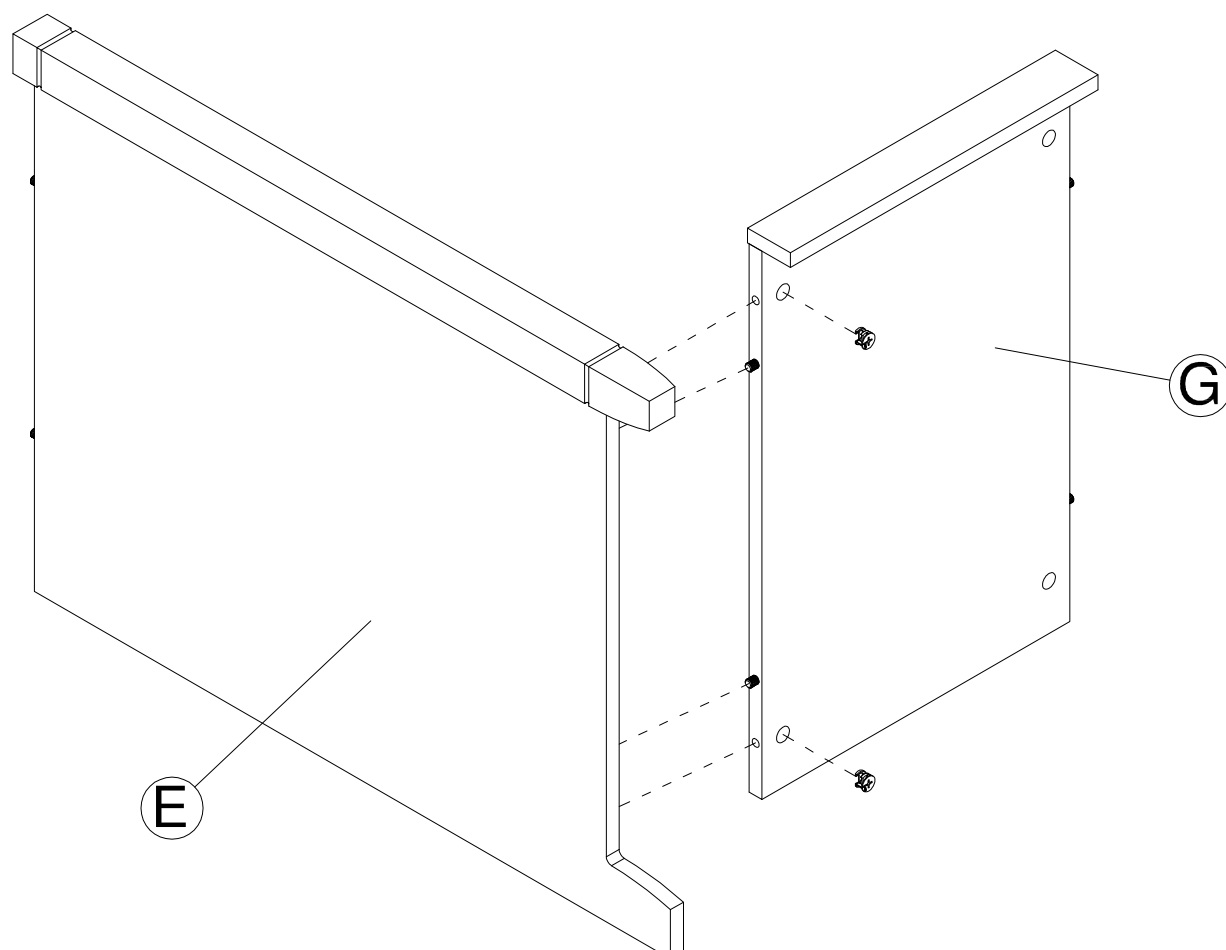
H181468



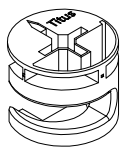
KD Cam

[2]

An assistant is required.
Es necesario un ayudante.
Un assistant est nécessaire.



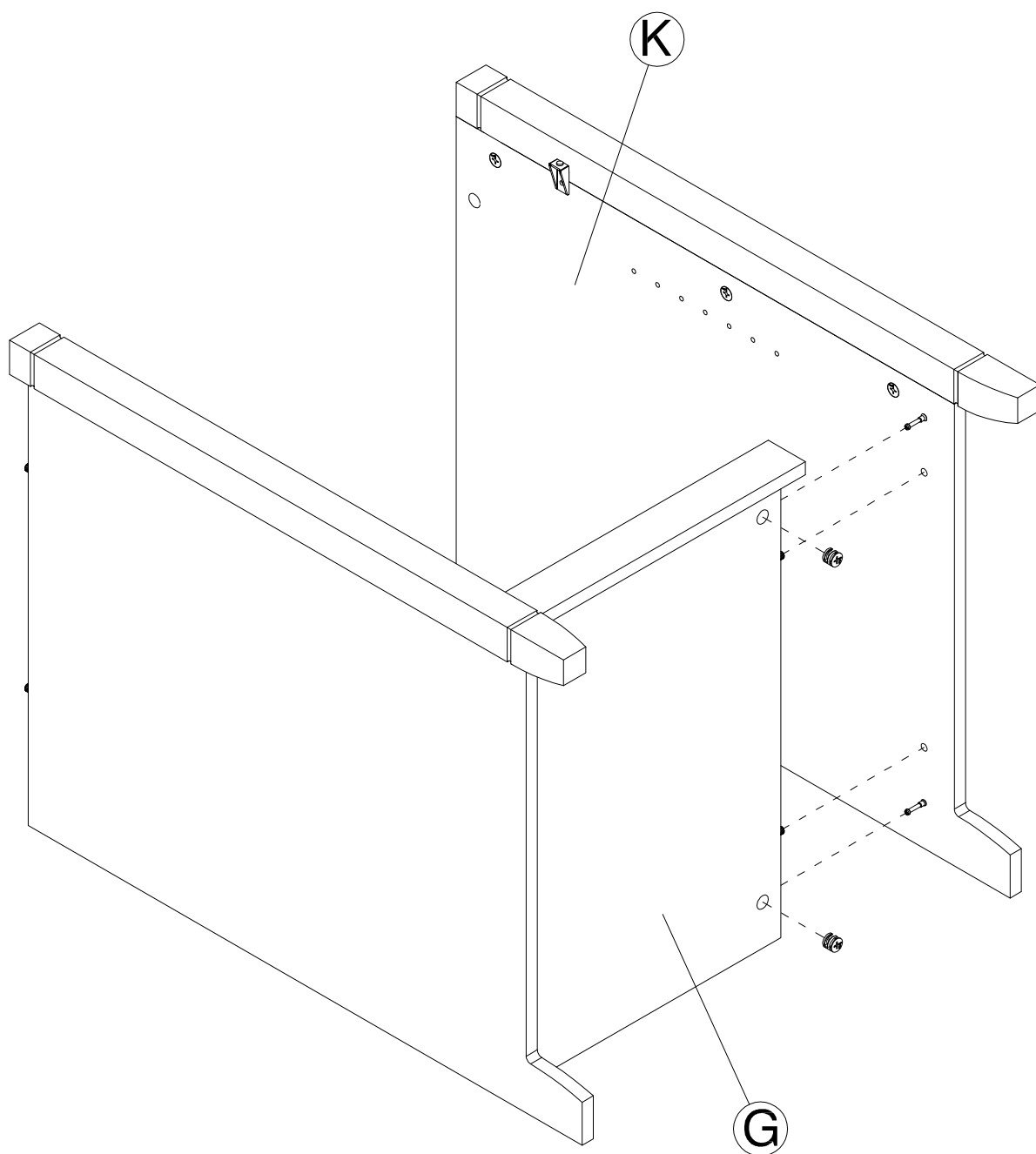
H181468



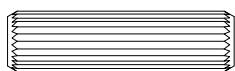
KD Cam

[2]

An assistant is required.
Es necesario un ayudante.
Un assistant est nécessaire.



H38169

Wood Dowel
8 x 30mm

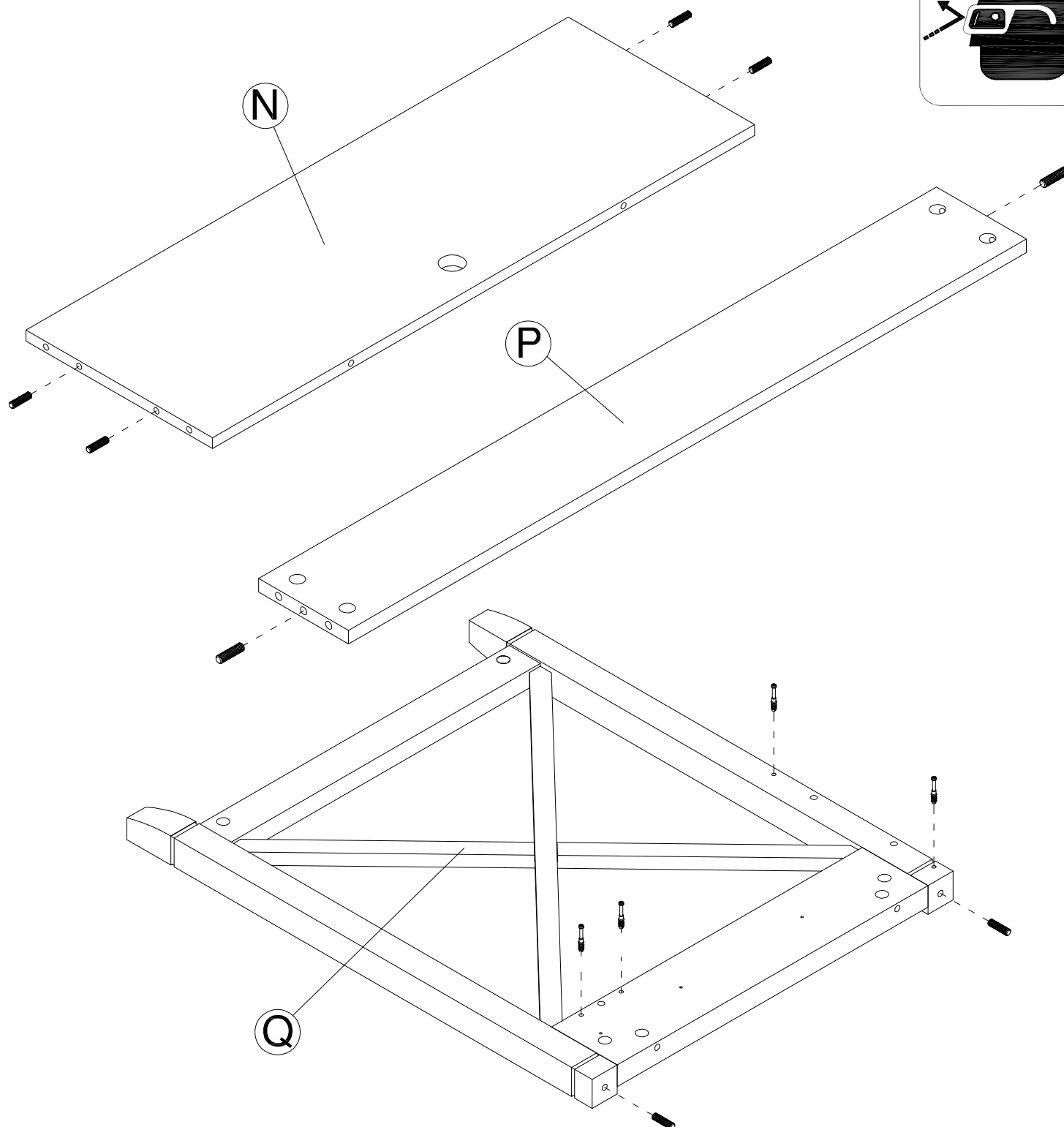
[8]

H180604



KD Bolt

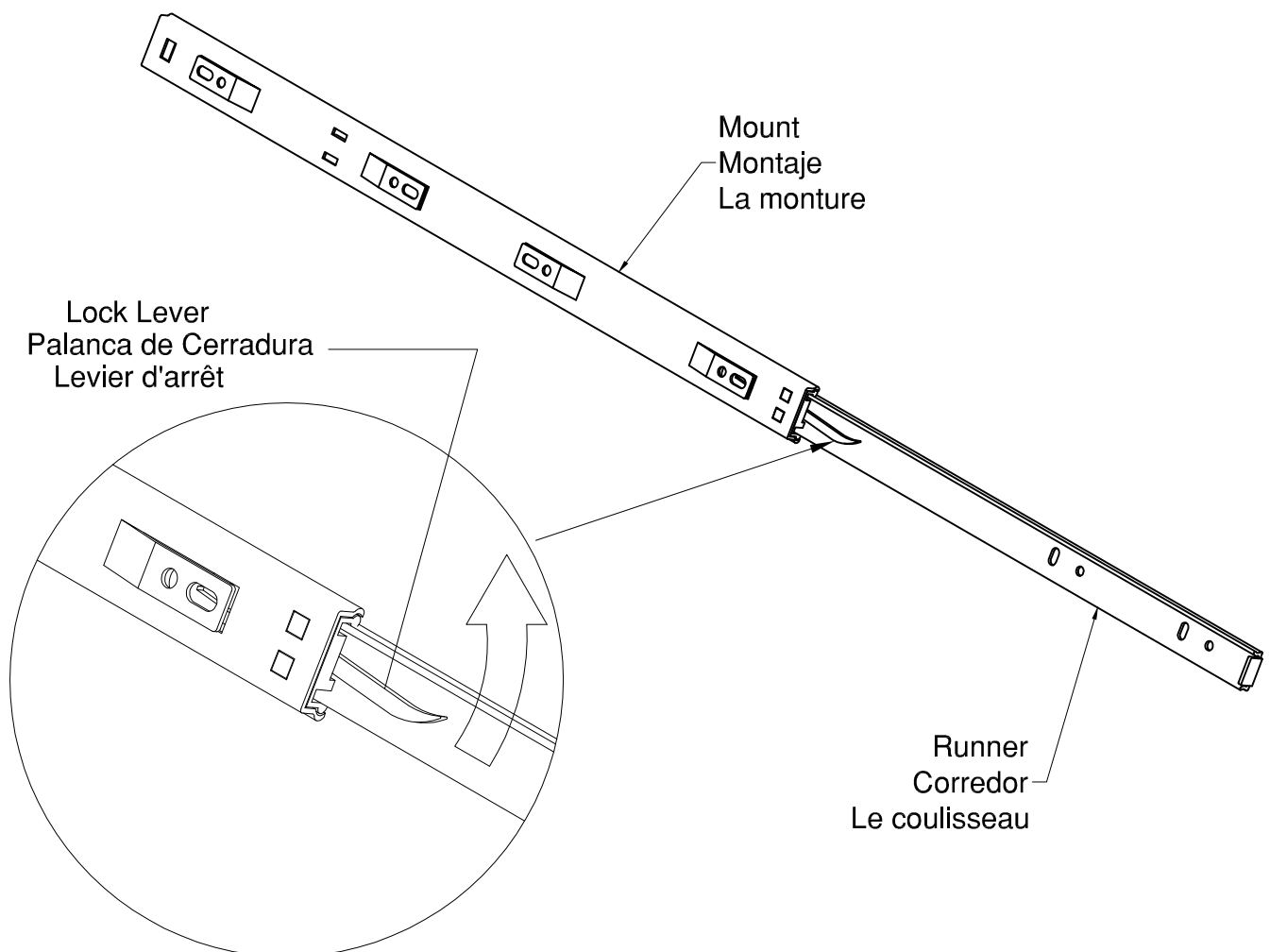
[4]



Common assembly techniques.
Técnica común de ensamblaje.
Techniques communes d'assemblage.

Move lock lever on the runner as shown to separate runner from mount .
Mueva la palanca de seguro en el corredor del montaje como se muestra.
Déplacez le levier de verrouillage sur le coulisseau comme illustré pour séparer le coulisseau de la monture .

Set runner aside to be used later in the Assembly Instructions.
Haga el corredor hacia un lado porque sera utilizado mas adelante.
Mettez le coulisseau de côté pour être utilisé plus tard dans les instructions d'assemblage.

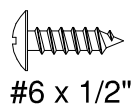


H167910



[1]

H101725



[3]

MODEL KWD154WG

H180730



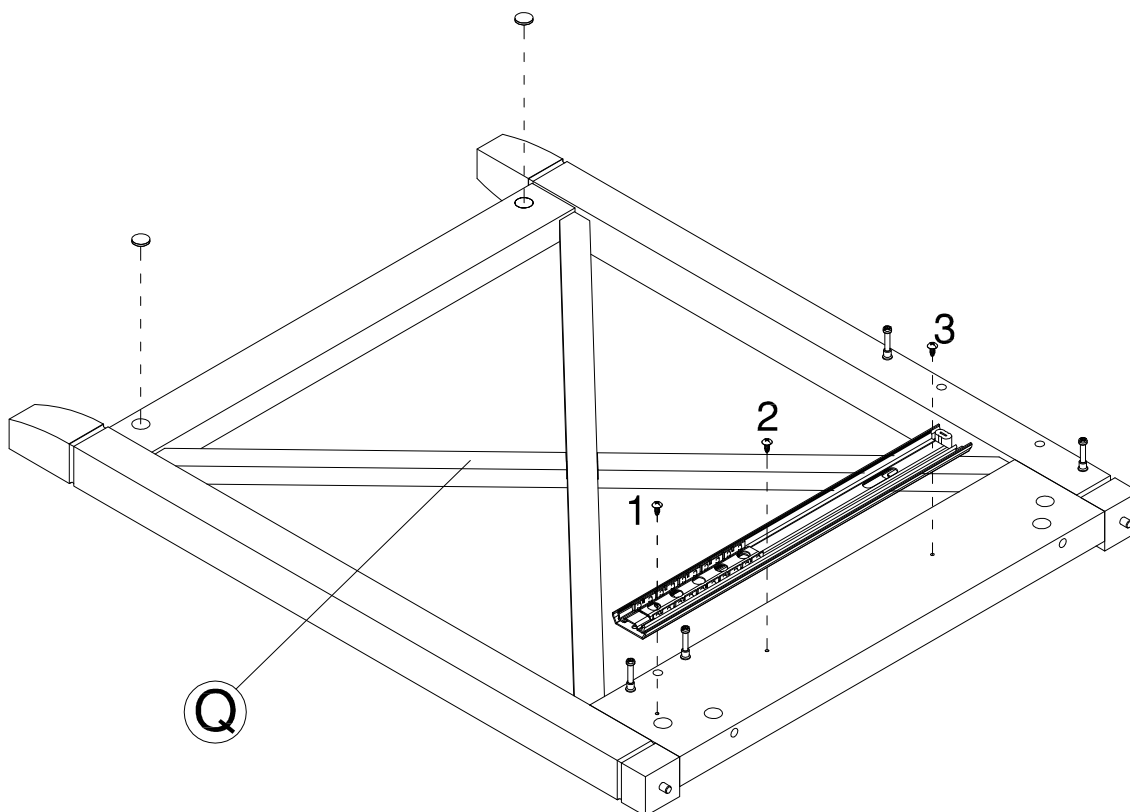
[2]

MODEL KWD154BC

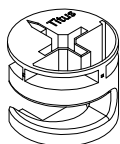
H159346



[2]



H181468

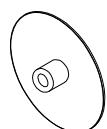


[4]

KD Cam

MODEL KWD154WG

H180730



[1]

Cover Cap

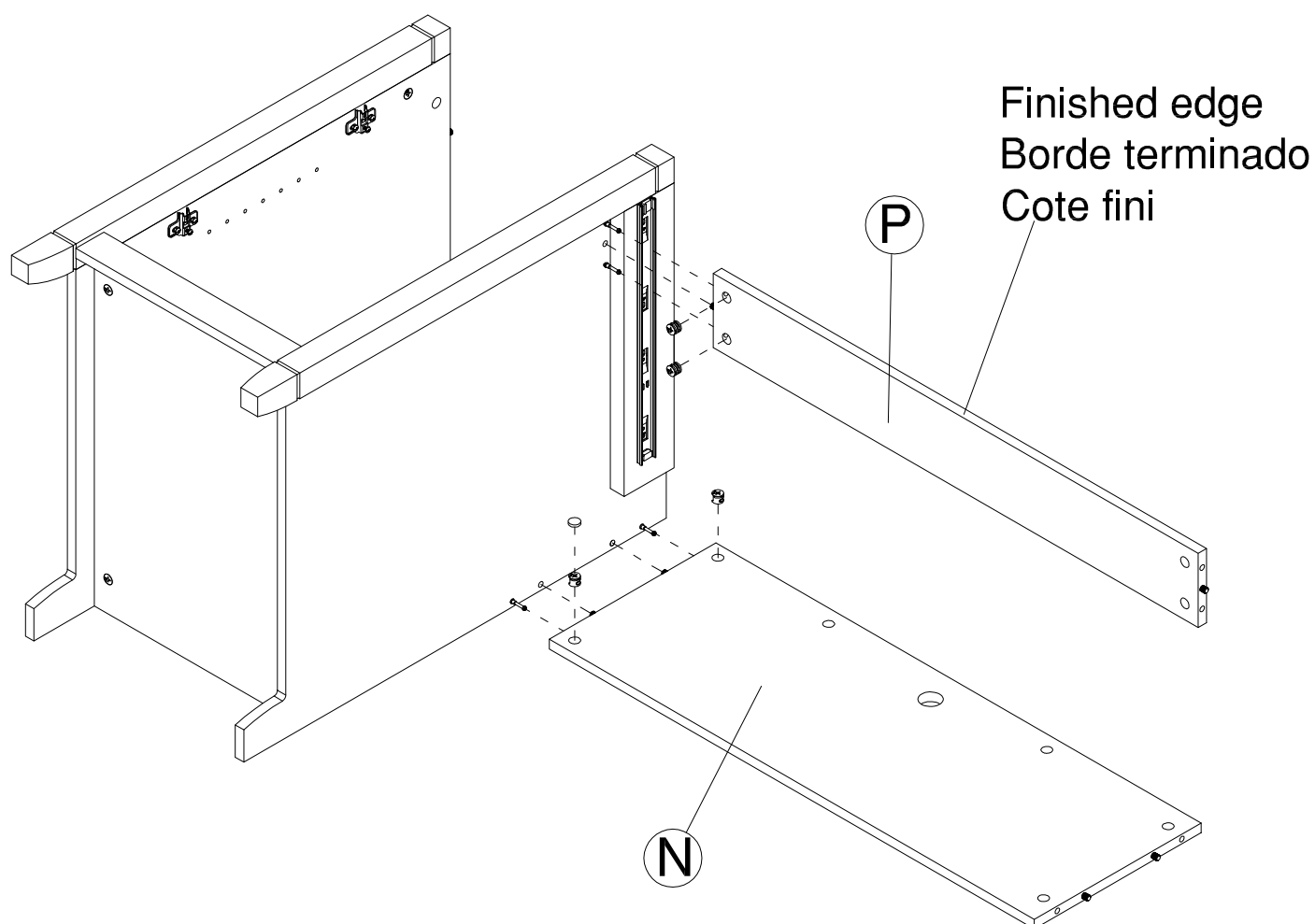
MODEL KWD154BC

H159346



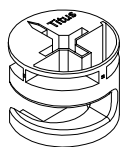
[1]

Cover Cap



An assistant is required.
Es necesario un ayudante.
Un assistant est nécessaire.

H181468

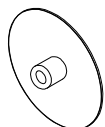


KD Cam

[4]

MODEL KWD154WG

H180730



Cover Cap

[1]

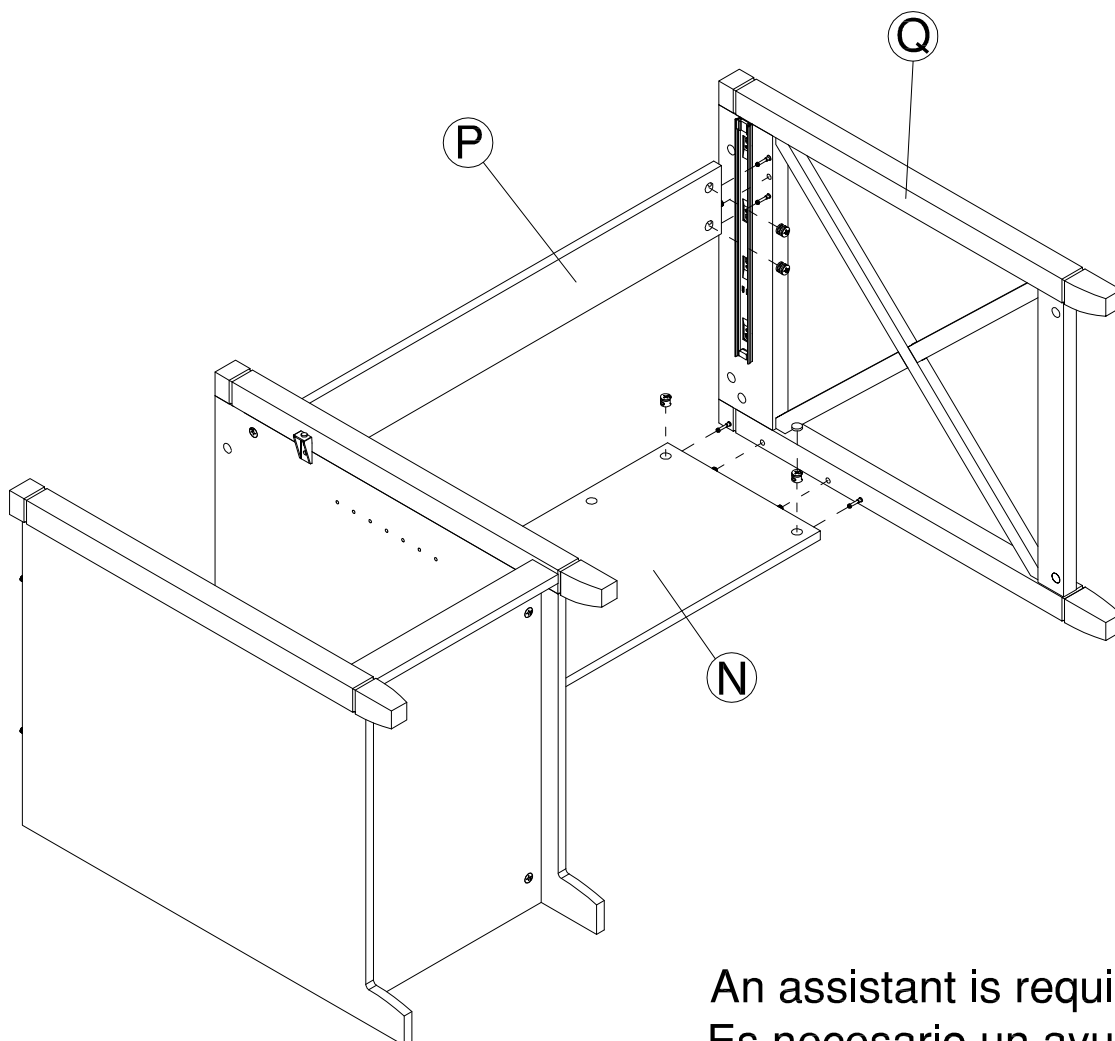
MODEL KWD154BC

H159346



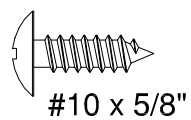
Cover Cap

[1]



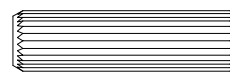
An assistant is required.
Es necesario un ayudante.
Un assistant est nécessaire.

H23119



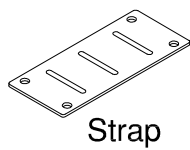
[16]

H38169

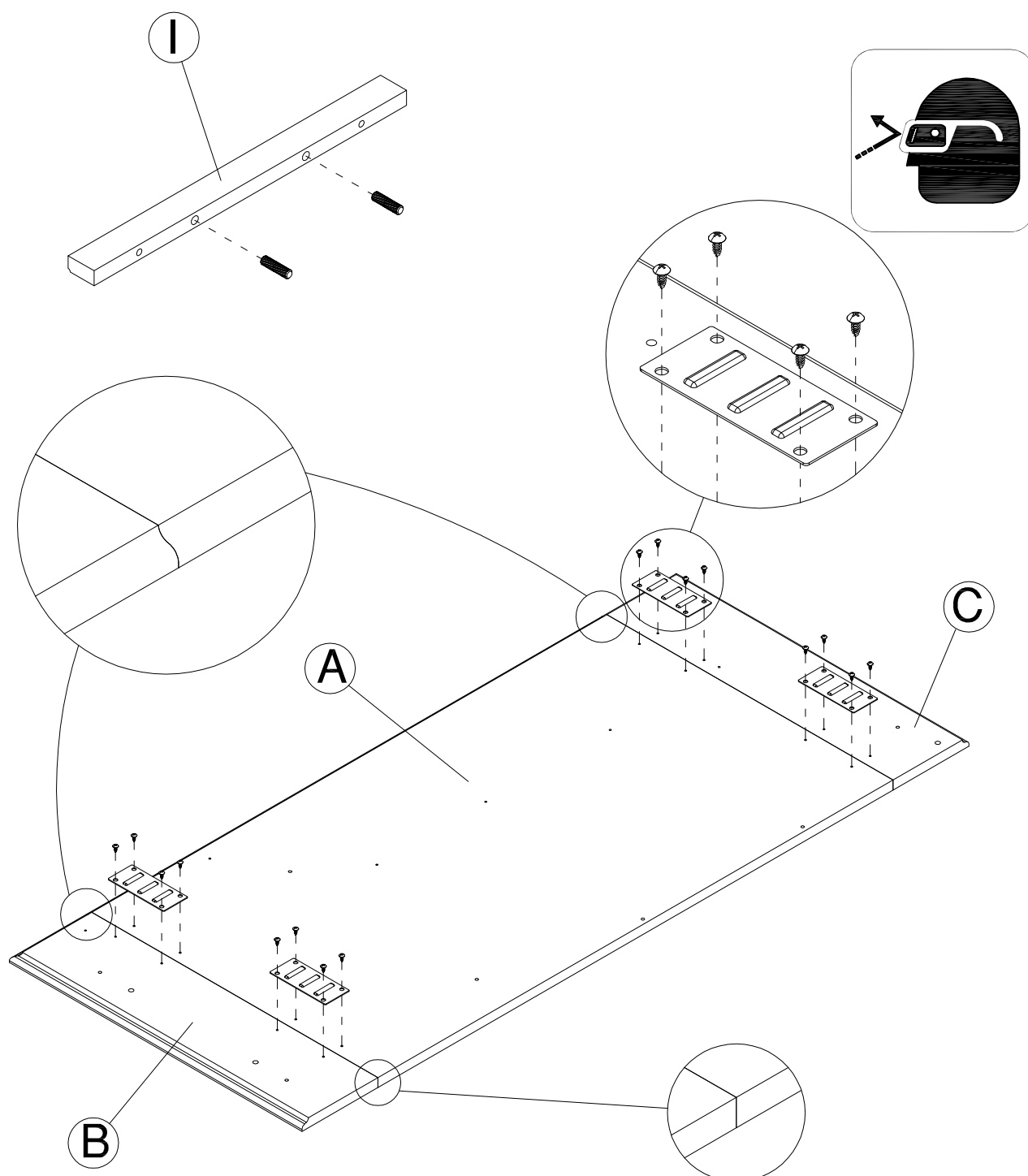
Wood Dowel
8 x 30mm

[2]

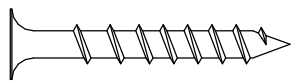
H39922



[4]



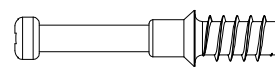
H23198



#10 x 1-1/2"

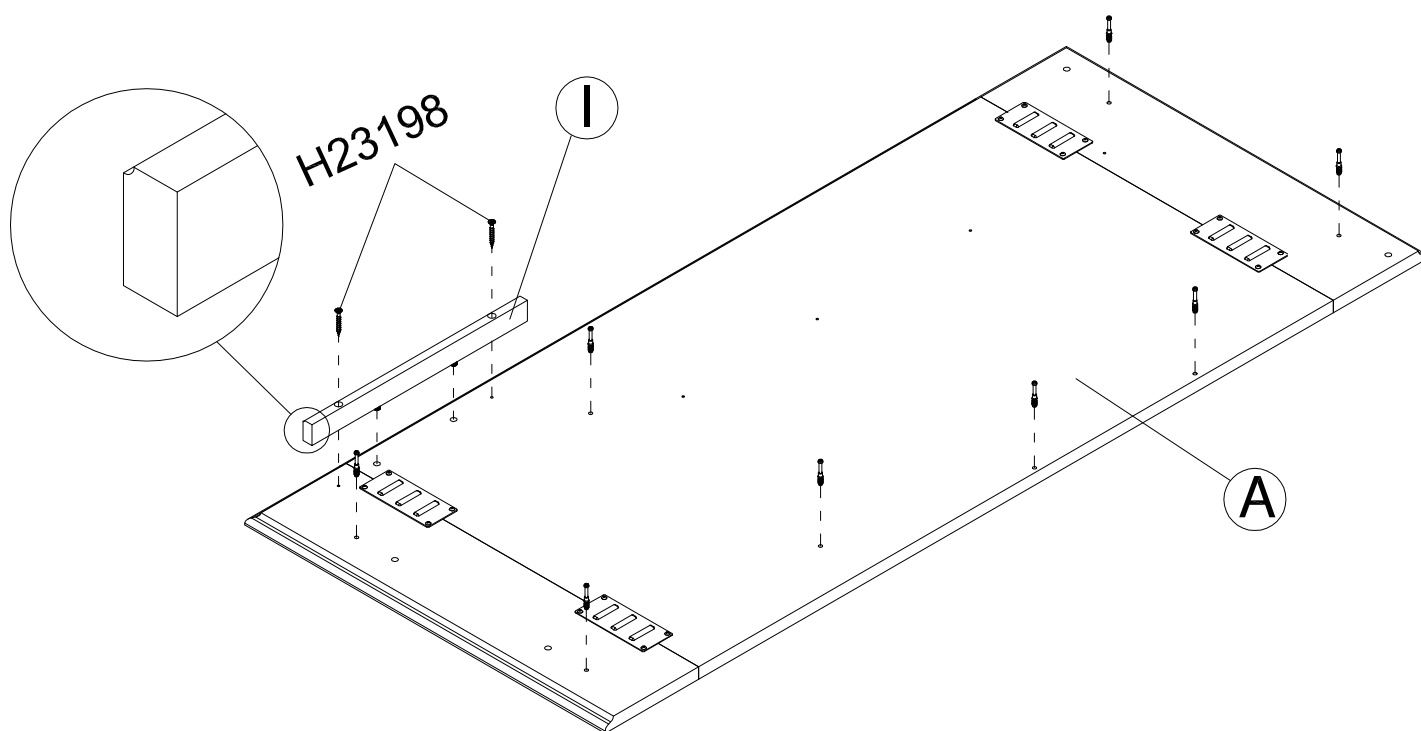
[2]

H180604

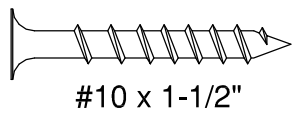


KD Bolt

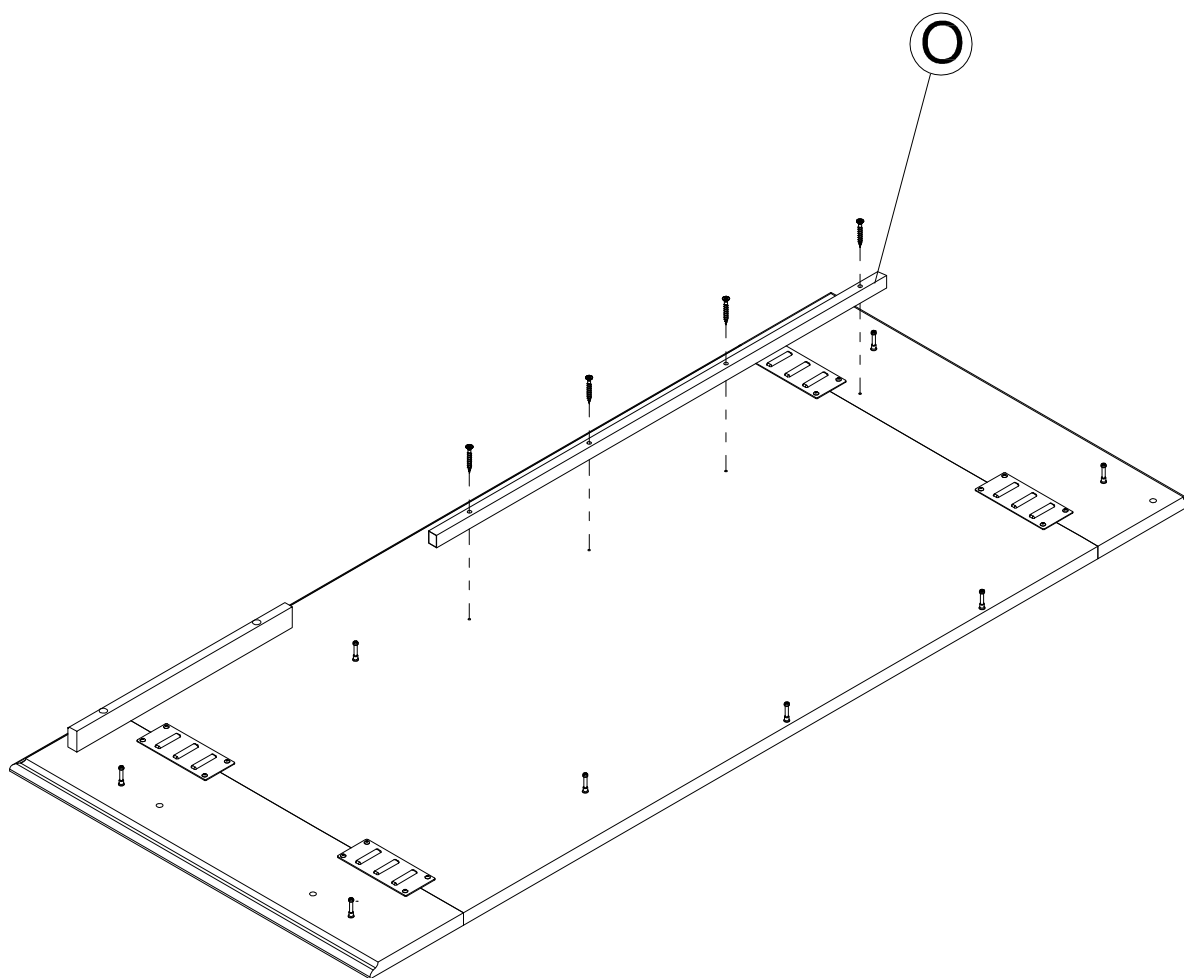
[8]



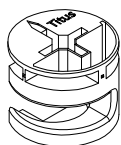
H23198



[4]



H181468

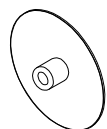


KD Cam

[8]

MODEL KWD154WG

H180730



Cover Cap

[4]

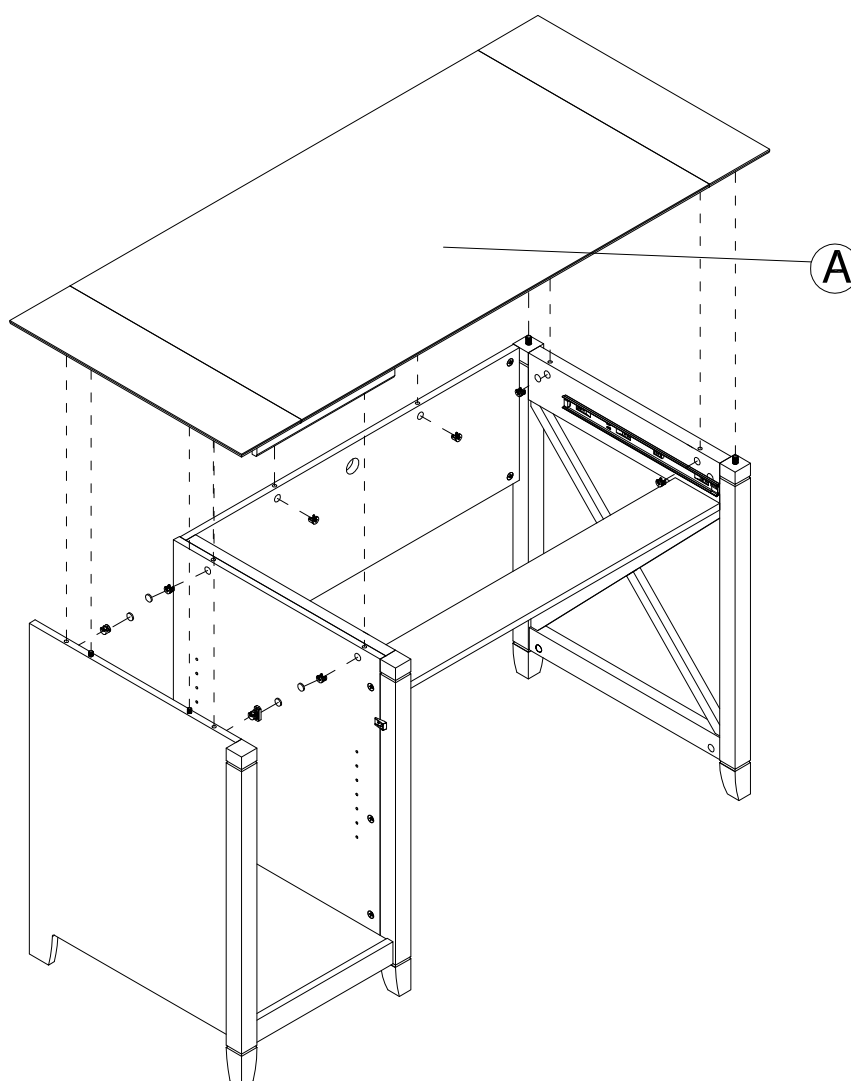
MODEL KWD154BC

H159346



Cover Cap

[4]

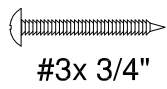


With assistant carefully stand unit up.

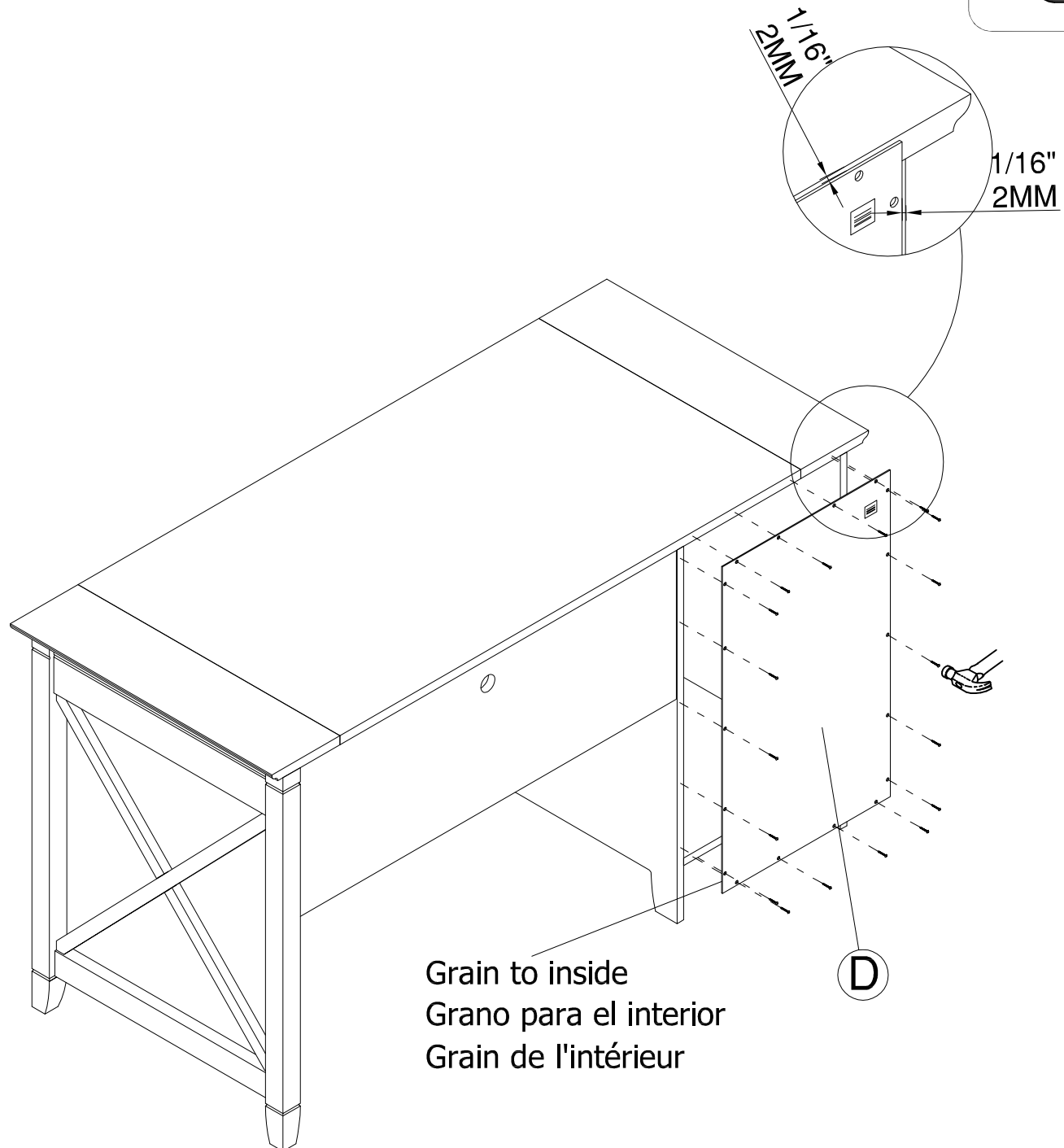
Con un asistente cuidadosamente levante la unidad a una posición vertical.

Avec l'aide d'un assistant placez soigneusement l'unité debout.

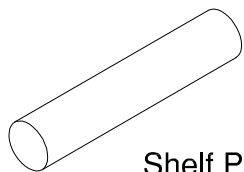
H34174



[18]



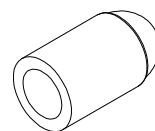
H23604



Shelf Pin

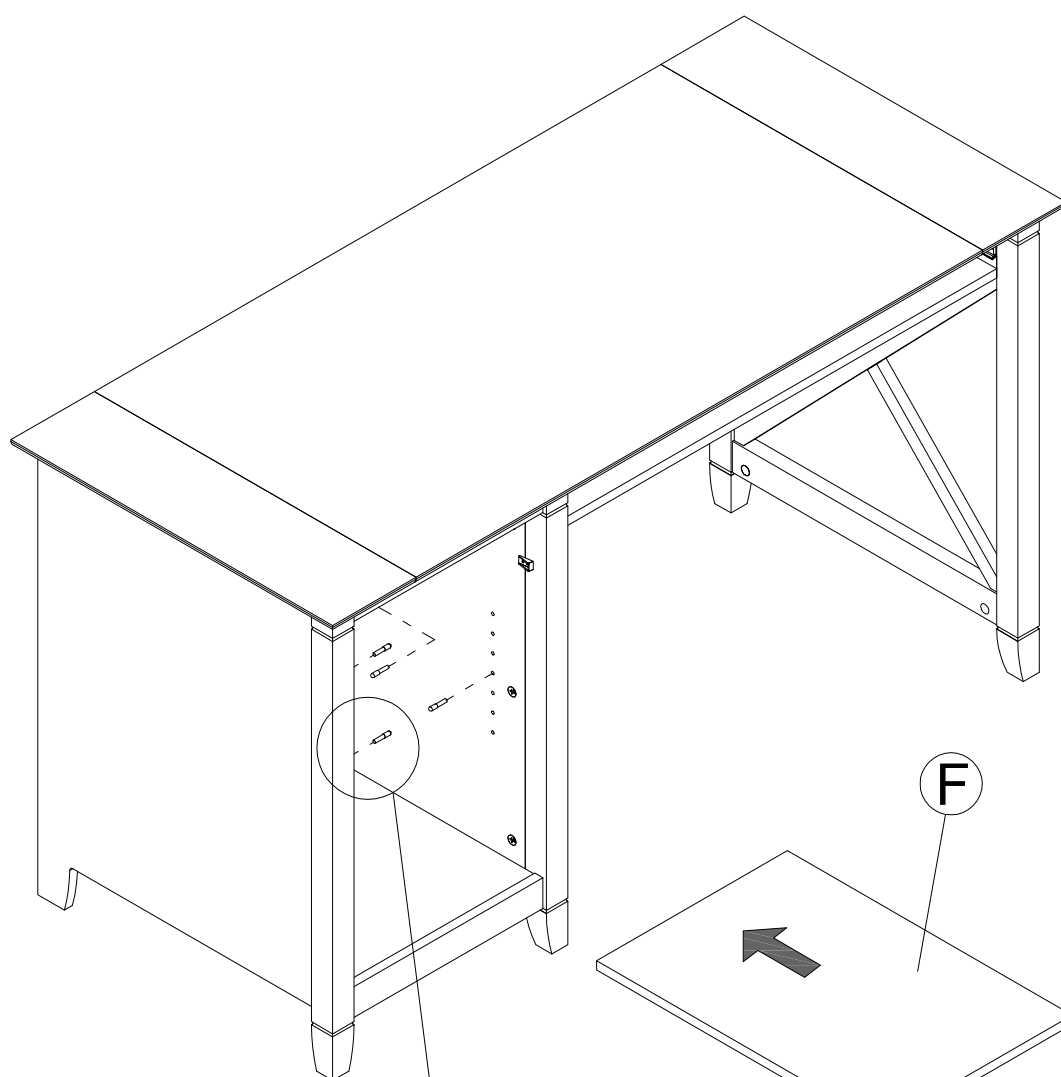
[4]

H126396

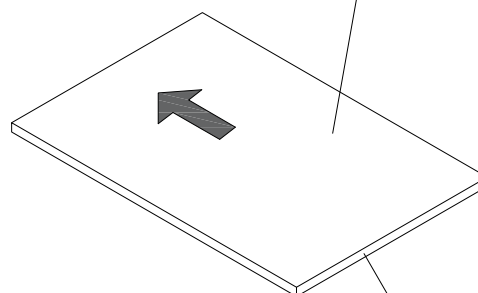


Shelf Pin Sleeve

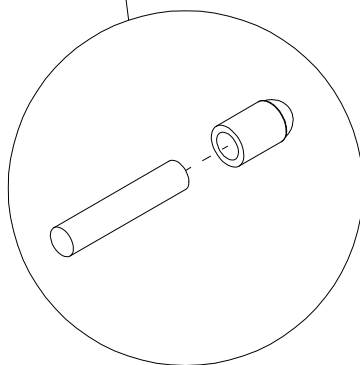
[4]



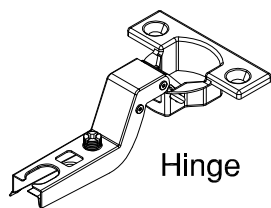
F



Finished edge
Borde terminado
Cote fini

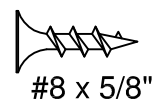


H170611



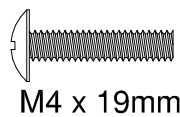
[2]

H153242



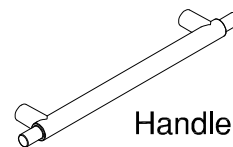
[4]

H160803

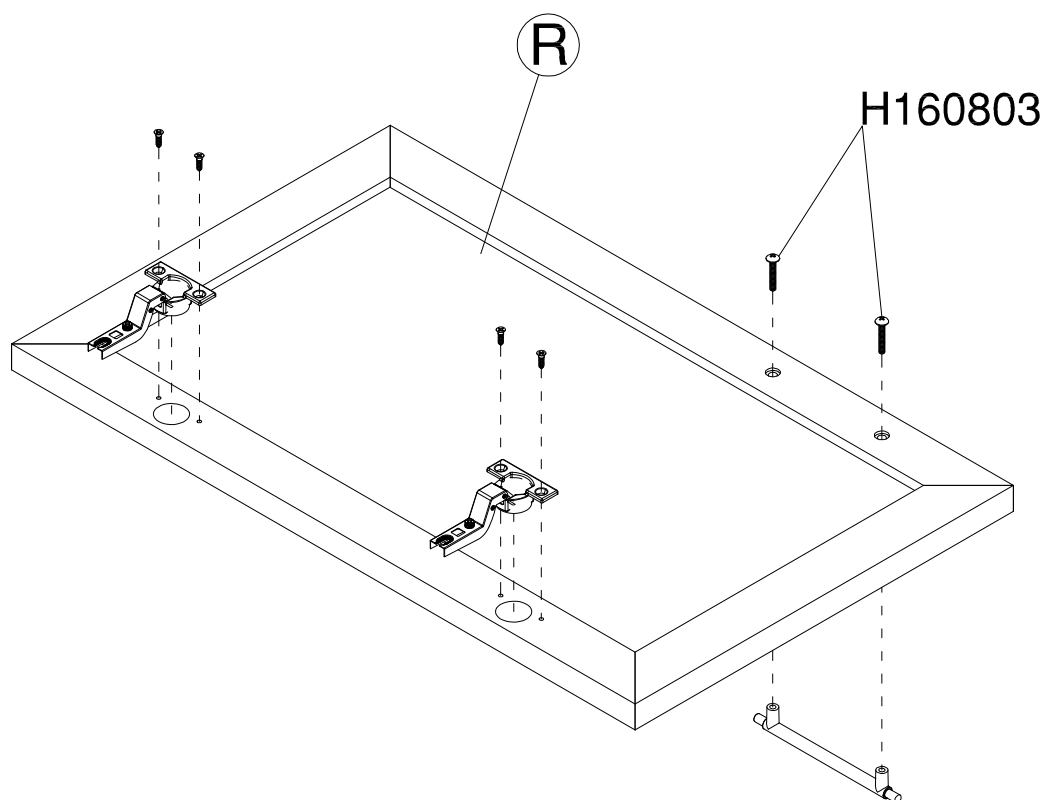


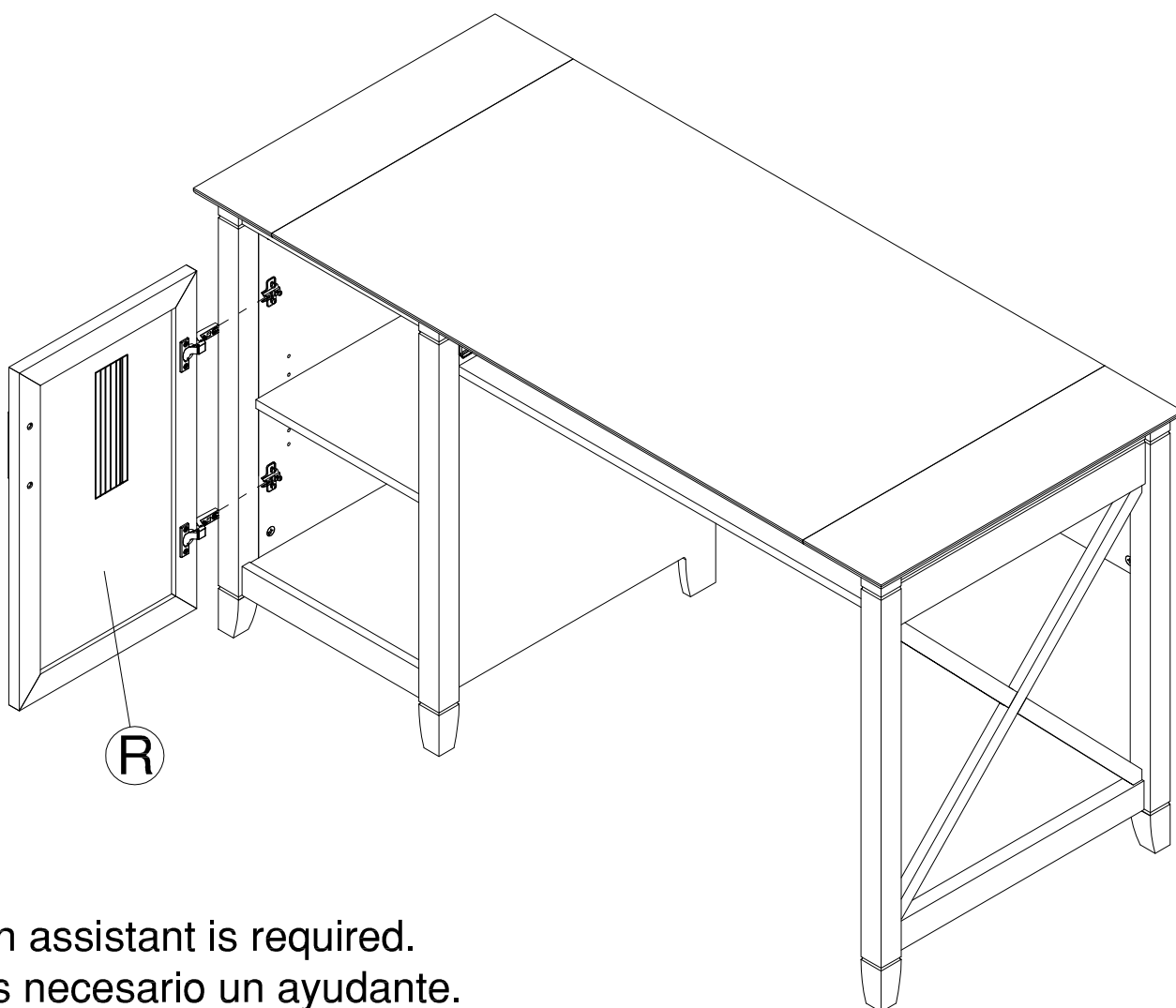
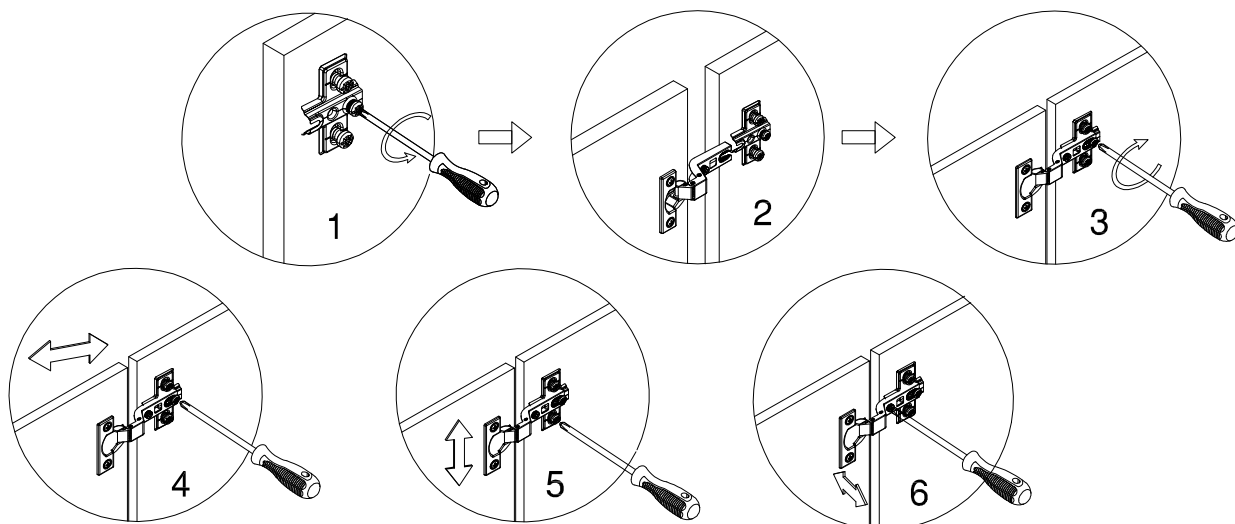
[2]

H180971



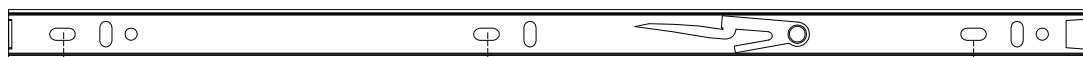
[1]





An assistant is required.
Es necesario un ayudante.
Un assistant est nécessaire.

H167910



[2]

2

3

14" Slide Runner
350mm

1

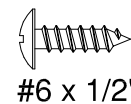
H38169



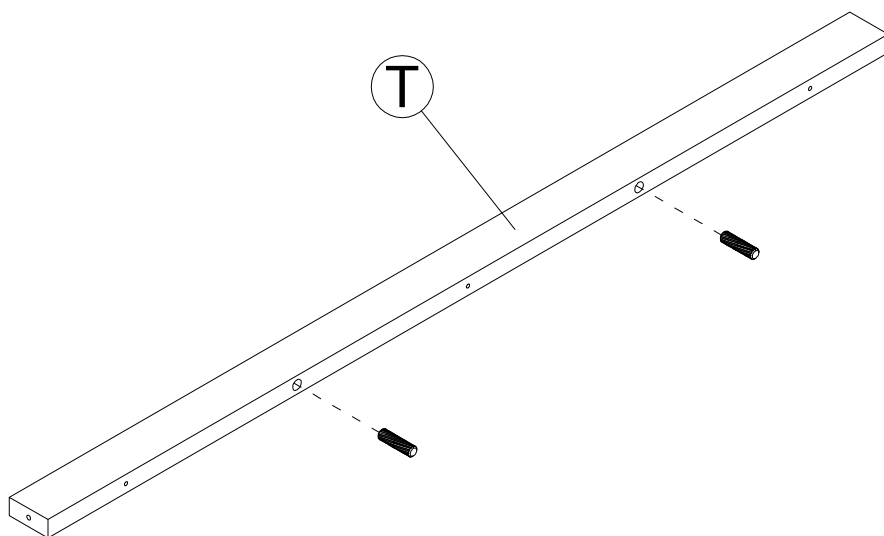
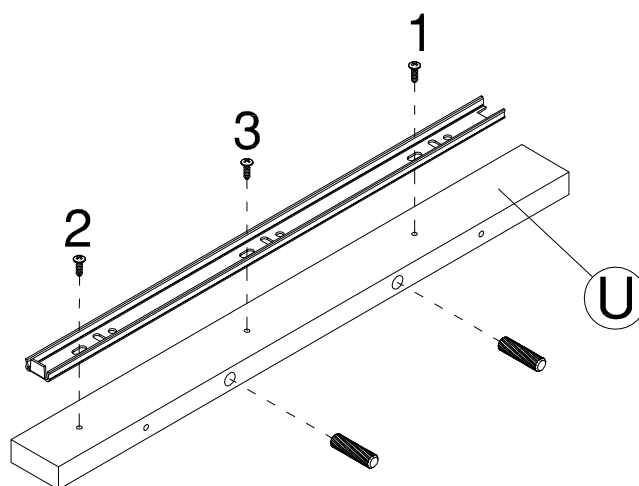
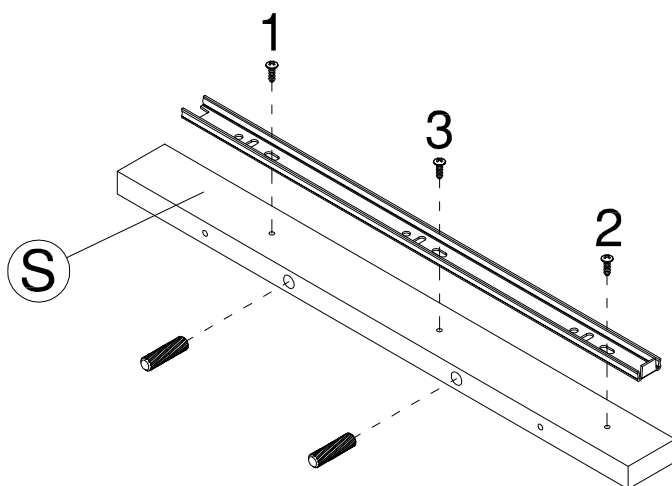
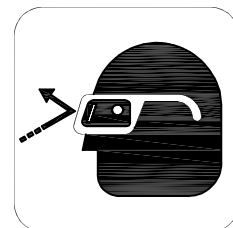
[6]

Wood Dowel
8 x 30mm

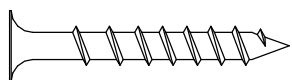
H101725



[6]

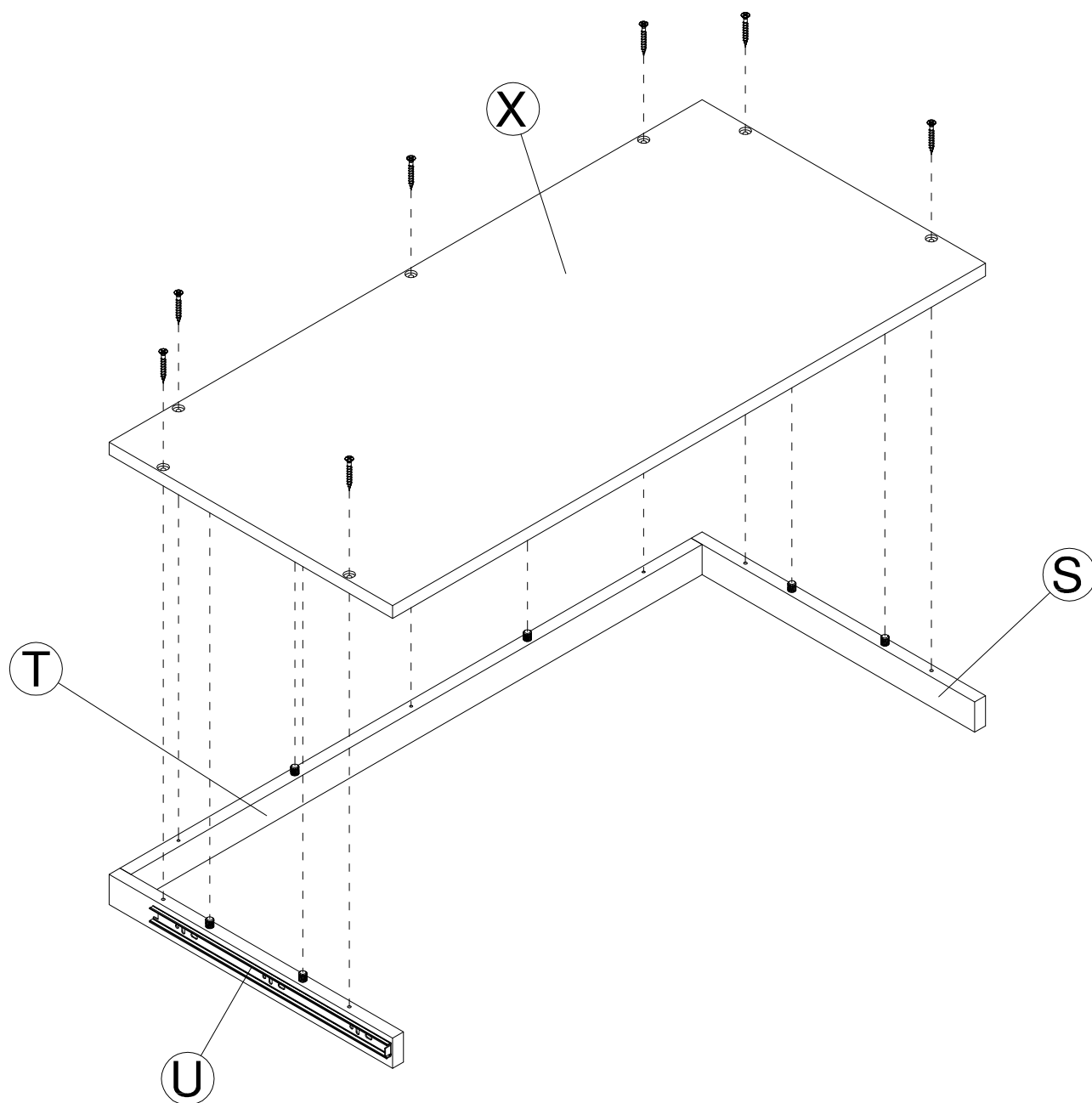


H23198



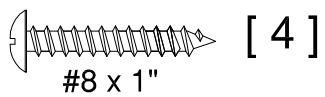
#10 x 1-1/2"

[7]



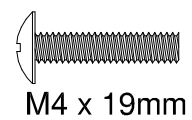
An assistant is required.
Es necesario un ayudante.
Un assistant est nécessaire.

H24437



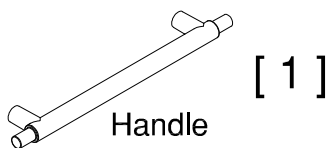
[4]

H160803



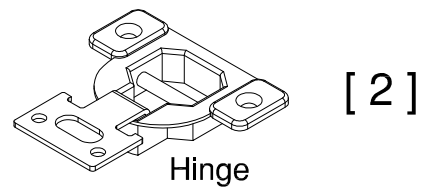
[2]

H180971



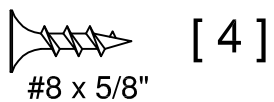
[1]

H180675

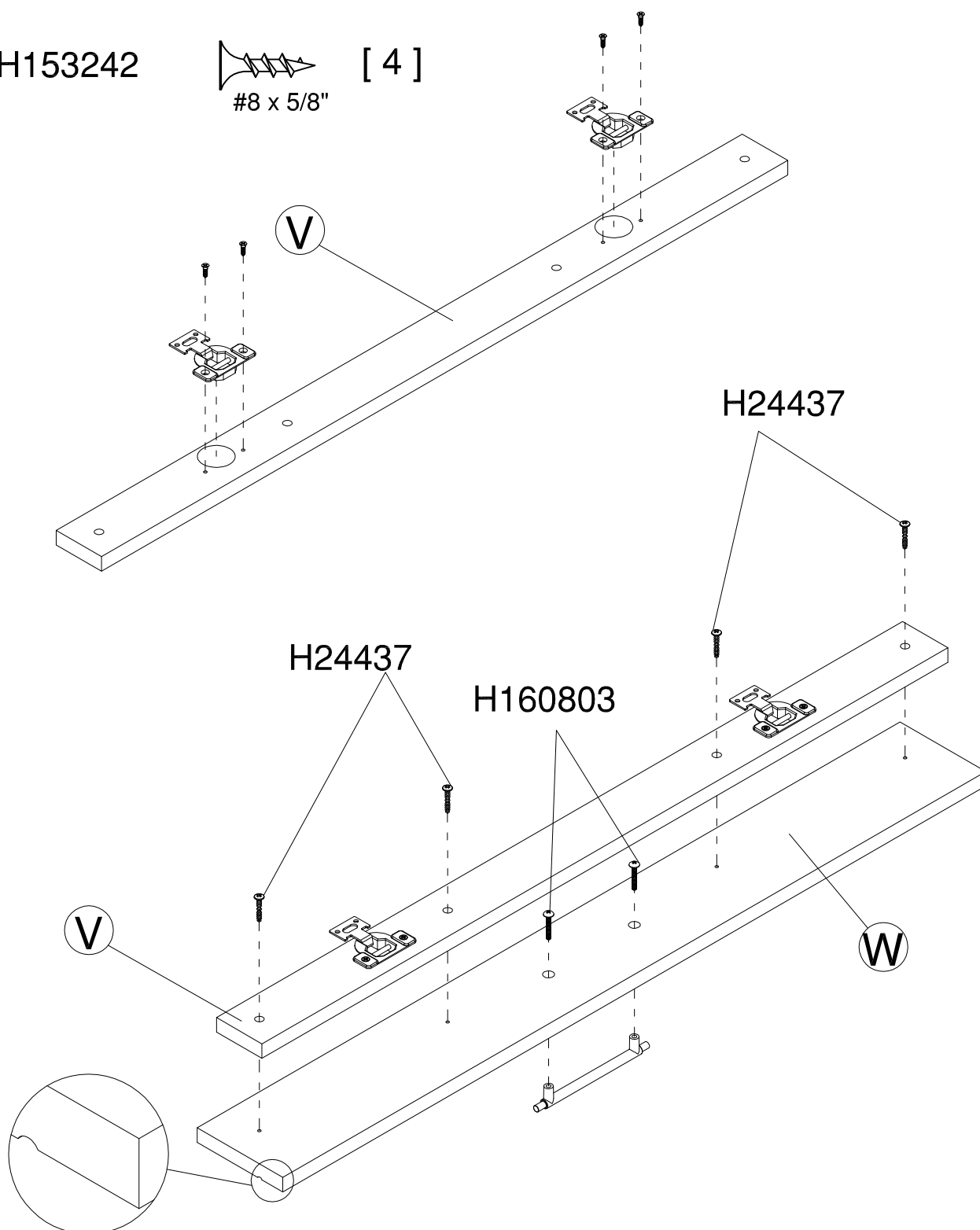


[2]

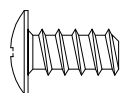
H153242



[4]



H146988



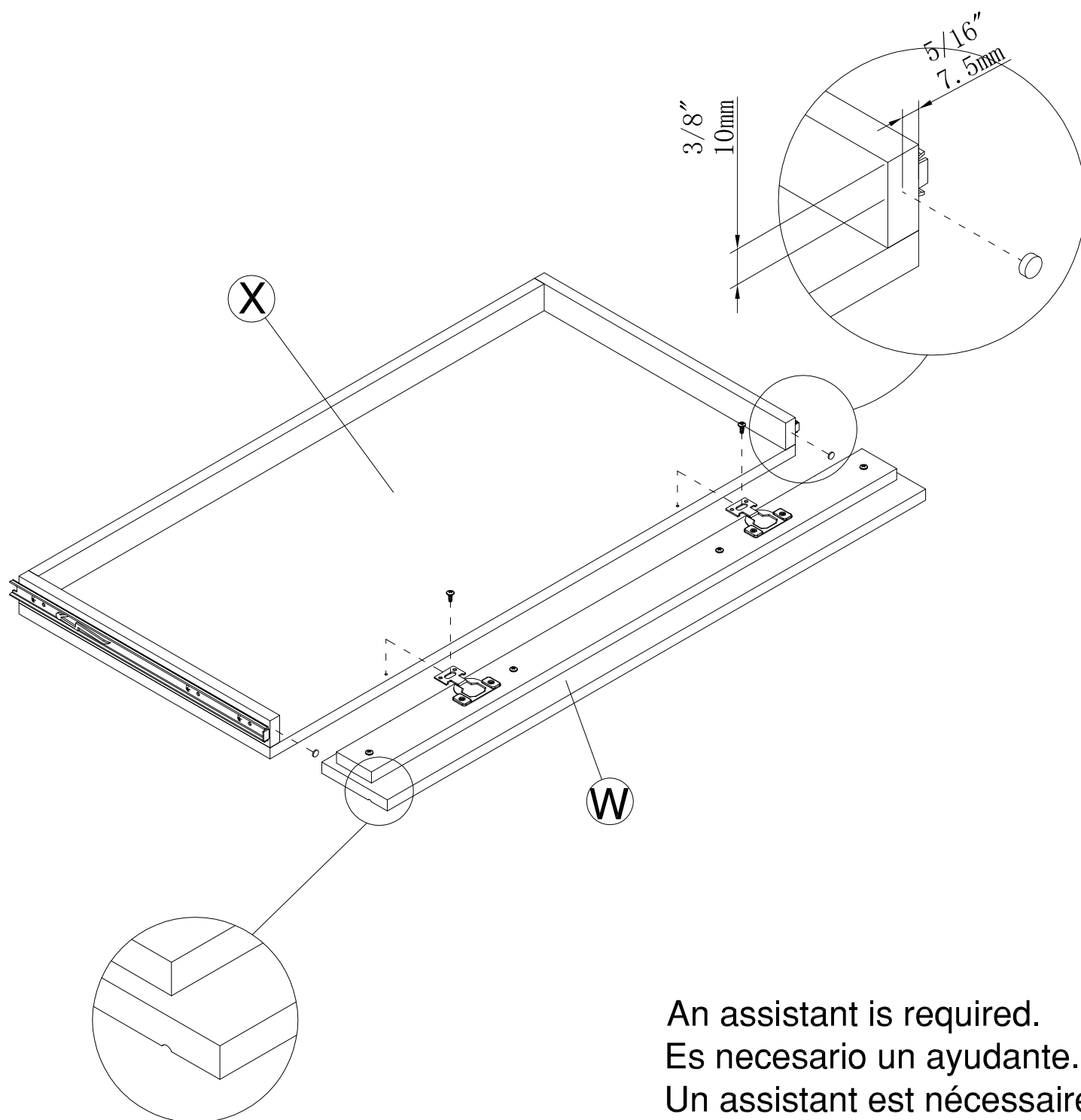
#12 x 1/2"

[2]

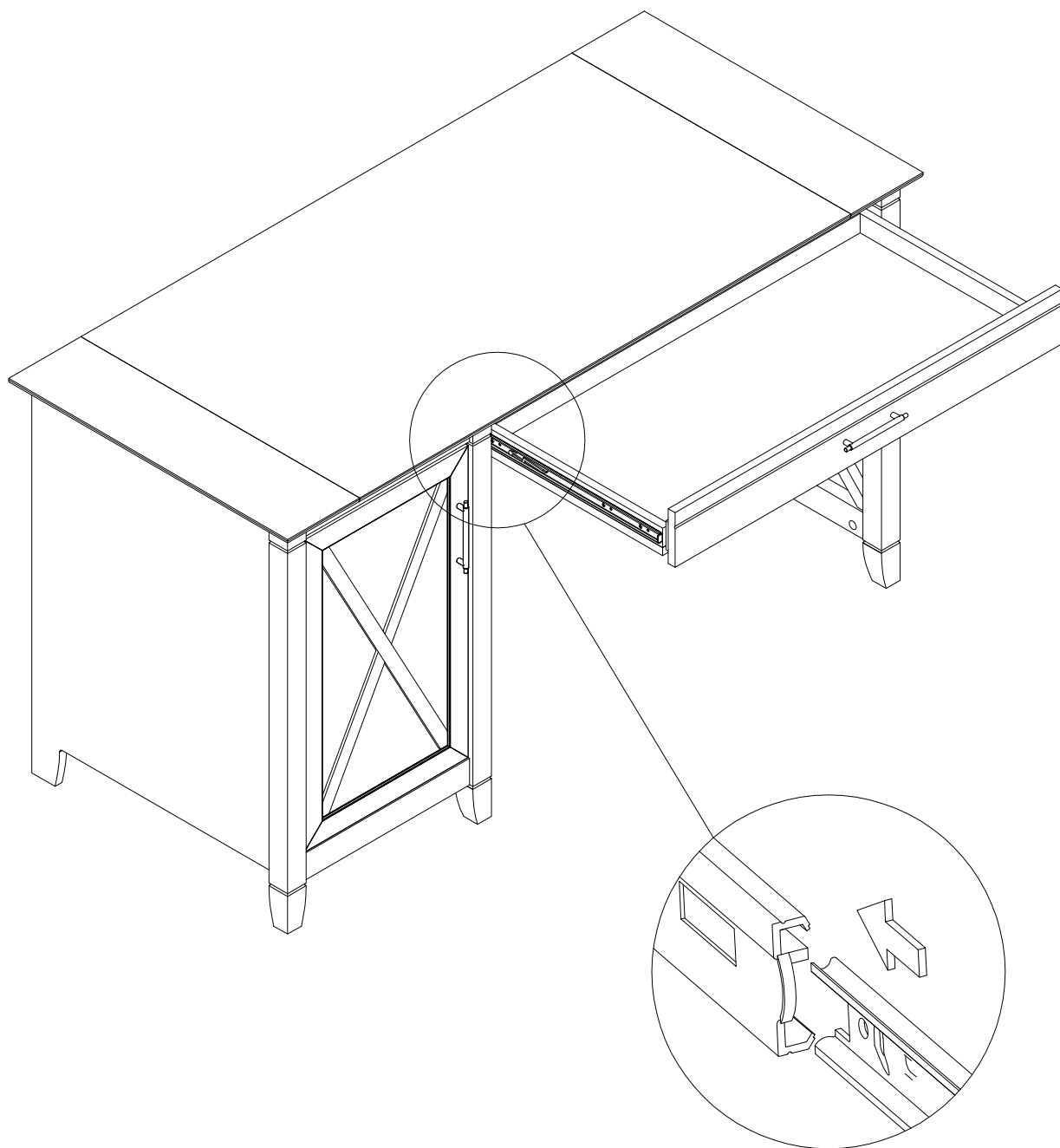
H180671

Bumper
Ø10x4mm

[2]



An assistant is required.
Es necesario un ayudante.
Un assistant est nécessaire.



THIS PAGE INTENTIONALLY LEFT BLANK

THIS PAGE INTENTIONALLY LEFT BLANK

Huali Trading Australia Pty Ltd Limited Three Year Warranty

This limited warranty covers the original purchase of new products used for normal commercial, personal or household use. Huali Trading Australia Pty Ltd (HTA) warrants its products will be free from defects in materials and workmanship (normal wear and tear excepted), for three (3) years from the date of purchase, except as provided below. **Any defective part for this product must be reported to HAT by the purchaser within 30 days of when defect becomes known.** HAT, at its' option, will **repair or replace this product or component(s) free of charge. Original sales receipt will be required prior to repair or replacement.** This warranty applies under conditions of normal use. This warranty does not apply to damage caused by fire, accident, negligence, misuse, use other than as stated in product instructions, improper cleaning or other circumstances not directly attributable to defects in materials and workmanship.

The word defects in this warranty is defined as imperfections that impair the use of the furniture product.

Natural variations occurring in wood or other materials will not be considered defects, and HTA does not warrant the colour – fastness or matching of colours, grains, or textures of such materials. This Warranty does not apply to: modifications of the product, attachments to the product not approved by HTA, and products that were not installed, used, or maintained in accordance with product instructions and warnings.

This warranty has the following exceptions: Fabrics, foam, veneer finishes and other covering materials are warranted for two (2) years from date of purchase.

Proof of purchase is required in the form of a receipt (copy or original) to validate warranty. All warranty claims can either be sent to:

sales@hualitrading.com.au

Or faxed to (02) 9621 1050

HTA's sole obligation and the users exclusive remedy under this warranty shall be limited to the repair, Credit (only applies to distributors) or replacement at HTA's sole discretion and cost, of product or components under the "COMPETITION AND CONSUMER ACT 2010".

"Our goods come with guarantees that cannot be excluded under the Australian Consumer Law. You are entitled to a replacement or refund for a major failure and for compensation for any other reasonably foreseeable loss or damage. You are also entitled to have the goods repaired or replaced if the goods fail to be of acceptable quality and the failure does not amount to a major failure".

Service Instructions

If you are having trouble with assembling your new furniture, please call us on (02) 9621 4701 for assistance.